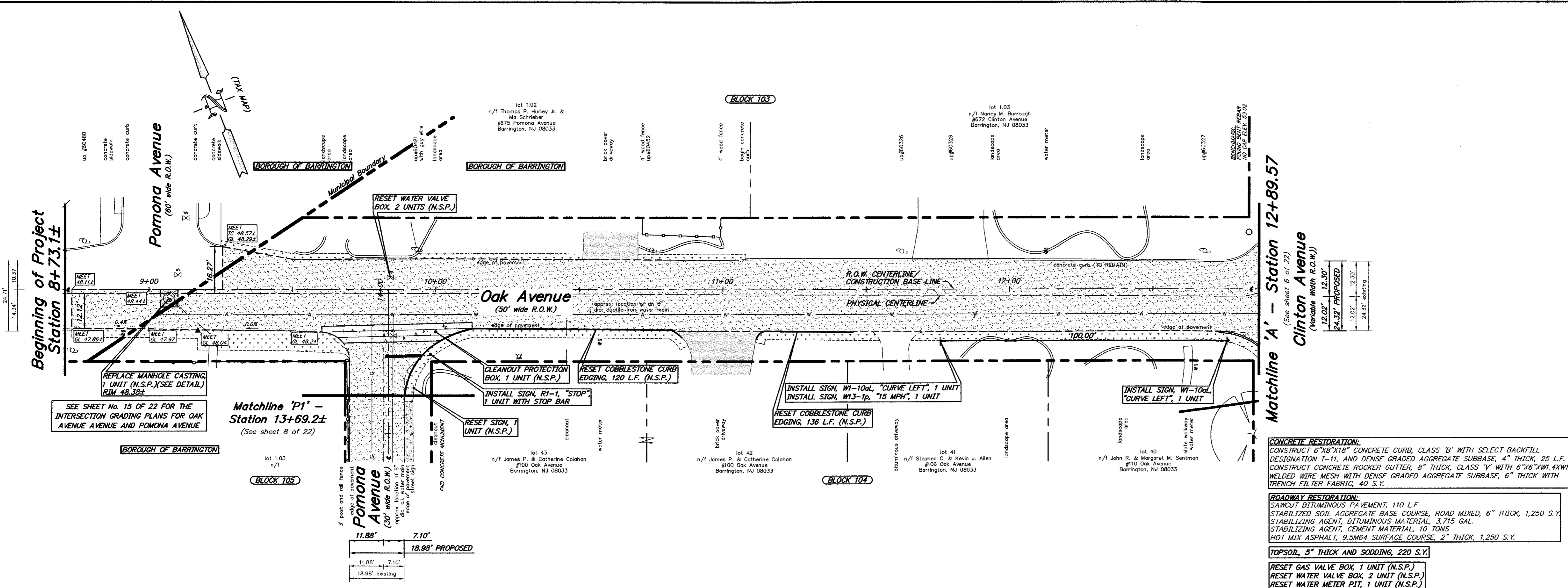


Base Bid 'B':
Reconstruction Of Oak Avenue from Pomona Avenue to
Farragut Avenue & The Dead End sections of Pomona
Avenue and Pomona Avenue
 (OWNED BY THE BOROUGH OF BARRINGTON)
Payment Items:

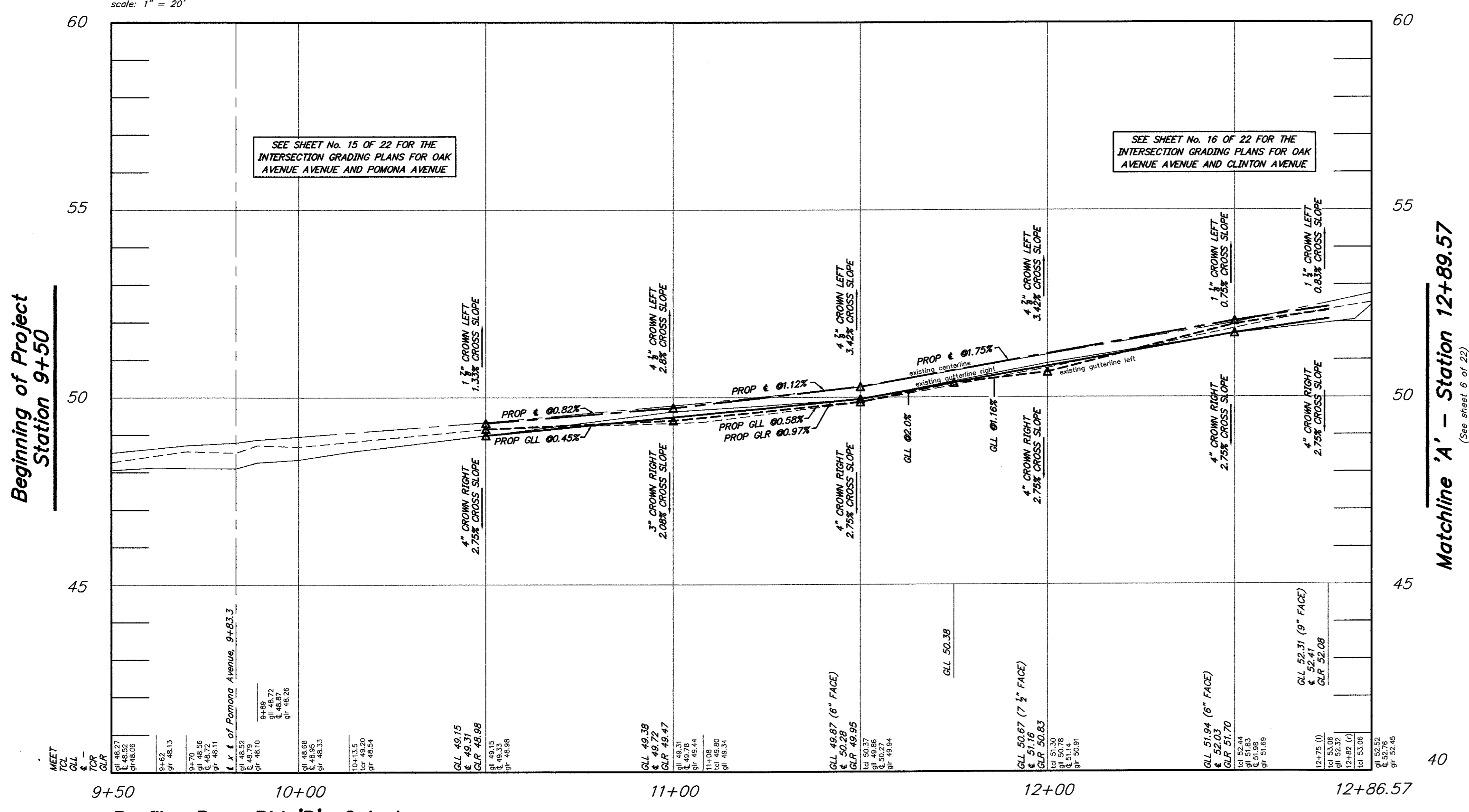
ITEM NUMBER	DESCRIPTION	UNIT MEASURED	QUANTITY SHEET No. 5
1	EXCAVATION, UNCLASSIFIED	C.Y.	0
2	SAWCUT BITUMINOUS PAVEMENT	L.F.	110
3	SAWCUT BITUMINOUS PAVEMENT DRIVEWAY	L.F.	0
4	TYPE 'A' INLET, WITH SELECT BACKFILL DESIGNATION 1-11, No. 8 STONE BEDDING AND TRENCH FILTER FABRIC	UNIT	0
5	SUBSURFACE UNDERDRAIN SYSTEM, COMPLETE	L.F.	0
6	6"X8"X18" CONCRETE CURB, CLASS 'B' WITH SELECT BACKFILL, DESIGNATION 1-11 AND DENSE GRADED AGGREGATE SUBBASE, 4" THICK	L.F.	25
7	CONCRETE ROCKER GUTTER, 8" THICK, CLASS 'Y' WITH 6"X6"X1/4" WELDED WIRE MESH AND DENSE GRADED AGGREGATE SUBBASE, 6" THICK AND TRENCH FILTER FABRIC	L.F.	40
8	CONCRETE SIDEWALK AND CURB RAMP, 4" THICK, CLASS 'B' WITH SOIL AGGREGATE SUBBASE, 4" THICK	S.Y.	0
9	CONCRETE DRIVEWAY APRON/ SIDEWALK, 6" THICK, CLASS 'B' WITH DENSE GRADED AGGREGATE SUBBASE, 4" THICK	S.Y.	0
10	DETECTABLE WARNING SURFACE	S.F.	0
11	STABILIZED SOIL AGGREGATE BASE COURSE, ROAD MIXED, 6" THICK	S.Y.	1250
12	STABILIZING AGENT, BITUMINOUS MATERIAL	GAL.	3715
13	STABILIZING AGENT, CEMENT MATERIAL	TONS	10
14	DENSE GRADED AGGREGATE SUBBASE, 4" THICK (DRIVEWAY)	S.Y.	0
15	HOT MIX ASPHALT, 25M64 BASE COURSE, 3" THICK (DRIVEWAY)	S.Y.	0
16	HOT MIX ASPHALT, 9.5M64, SURFACE COURSE, 2" THICK	S.Y.	1250
17	TRAFFIC STRIPES, 6" WIDE	L.F.	0
18	TRAFFIC STRIPES, 12" WIDE	L.F.	15
19	SIGN	UNIT	4
20	TOPSOIL, 5" THICK AND SODDING	UNIT	220
21	ASPHALT PRICE ADJUSTMENT	L.S.	L.S.
22	FUEL PRICE ADJUSTMENT	L.S.	L.S.

No Specific Payment Items:

ITEM NUMBER	DESCRIPTION	UNIT MEASURED	QUANTITY SHEET No. 5
A	SOIL EROSION AND SEDIMENT CONTROL	N.S.P.	N.S.P.
B	REMOVE CONCRETE SIDEWALK	S.Y.	0
C	REMOVE CONCRETE DRIVEWAY APRON/ SIDEWALK	S.Y.	0
D	REMOVE CONCRETE CURB	S.Y.	0
E	REPLACE MANHOLE CASTING	UNIT	1
F	CLEANOUT PROTECTION BOX	UNIT	1
G	RESET BRICK DRIVEWAY	S.F.	0
H	RESET BRICK SIDEWALK	S.F.	0
I	RESET BRICK EDGING	L.F.	0
J	RESET COBBLESTONE CURB EDGING	L.F.	120
K	RESET GRANITE BLOCK LANDSCAPING	L.F.	0
L	RESET RAILROAD TIE EDGING	L.F.	0
M	RESET STONE LANDSCAPE AREA	S.F.	0
N	RESET SLATE WALKWAY	S.F.	0
O	RESET SIGN	UNIT	1
P	RESET GAS VALVE BOX	UNIT	0
Q	RESET WATER VALVE BOX	UNIT	2
R	RESET WATER METER PIT	UNIT	1
S	REMOVE SIGN	UNIT	0
T	TRIM VEGETATION	S.F.	0
U	JOINT SEALER	L.F.	110
V	CONCRETE SEALING	N.S.P.	N.S.P.
W	WATERING	N.S.P.	N.S.P.
X	MAINTENANCE AND PROTECTION OF VEHICULAR AND PEDESTRIAN TRAFFIC	N.S.P.	N.S.P.



Plan: Base Bid 'B': Oak Avenue
 scale: 1" = 20'



Profile: Base Bid 'B': Oak Avenue
 scale: horizontal: 1 inch = 20 feet
 vertical: 1 inch = 2 feet

Legend:

- HOT MIX ASPHALT, 9.5M64 SURFACE COURSE, 2" THICK OVER STABILIZED SOIL AGGREGATE BASE COURSE, ROAD MIXED, 6" THICK
- STABILIZING AGENT, BITUMINOUS MATERIAL
- STABILIZING AGENT, CEMENT MATERIAL
- ROCKER GUTTER, 8" THICK, CLASS 'Y' WITH 6"X6"X1/4" WELDED WIRE MESH AND DENSE GRADED AGGREGATE SUBBASE, 6" THICK, WITH TRENCH FILTER FABRIC
- TOPSOIL, 5" THICK AND SODDING
- 6"X8"X18" CONCRETE CURB, CLASS 'B' WITH SELECT BACKFILL DESIGNATION 1-11, AND DENSE GRADED AGGREGATE SUBBASE, 4" THICK

THE CONTRACTOR SHALL UTILIZE THE EXISTING ROADWAY AS A CONSTRUCTION ENTRANCE. THE ROADWAY SHALL BE CLEANED AS NEEDED OR AS DIRECTED BY THE CAMDEN COUNTY SOIL CONSERVATION DISTRICT AND THE BOROUGH ENGINEER, TO ELIMINATE TRAFFIC HAZARDS, DUST, ETC. (see soil conservation notes), LUMP SUM (N.S.P.).

CRUSHED OR RECYCLED CONCRETE OR CRUSHED OR RECYCLED ASPHALT WILL NOT BE ACCEPTED AS A SUBSTITUTE TO DENSE GRADED AGGREGATE FOR THIS PROJECT.

(N.S.P.) INDICATES NO SPECIFIC PAYMENT WILL BE MADE FOR THE ITEM. THE COST SHALL BE INCLUDED IN VARIOUS ITEMS IN THE PROPOSAL.

THE CONTRACTOR SHALL NOT ENTER ONTO ANY PRIVATE PROPERTIES WITHOUT RECEIVING A "CONSENT TO ENTER AGREEMENT" FROM THE PROPERTY OWNER.

SHOULD POLICE TRAFFIC DIRECTORS BE REQUIRED, THEIR SERVICES SHALL BE PAID FOR BY THE BOROUGH, AT NO COST TO THE CONTRACTOR. HOWEVER, THE CONTRACTOR MUST STILL PROVIDE AT HIS COST, MAINTENANCE AND PROTECTION OF TRAFFIC IN ACCORDANCE WITH THE SPECIFICATIONS. 24-HOUR ROAD CLOSINGS WILL NOT BE PERMITTED, UNLESS APPROVED BY THE CHIEF OF POLICE.

CONSTRUCTION AND MATERIALS SHALL CONFORM TO THE DEPARTMENT'S STANDARD SPECIFICATIONS FOR ROAD AND BRIDGE CONSTRUCTION, 2019 EDITION, WHICH IS INCORPORATED HEREIN BY REFERENCE, AS AMENDED AND SUPPLEMENTED, AND THE DEPARTMENT'S SUPPLEMENTARY SPECIFICATIONS FOR STATE AID PROJECTS, 2019 EDITION, WHICH IS INCORPORATED HEREIN BY REFERENCE, AS AMENDED AND SUPPLEMENTED. STANDARD CONSTRUCTION DETAILS SHALL CONFORM TO THE LATEST REQUIREMENTS OF THE DEPARTMENT OF TRANSPORTATION. THE NEW JERSEY DEPARTMENT OF TRANSPORTATION "STANDARD ROADWAY CONSTRUCTION, TRAFFIC CONTROL, BRIDGE CONSTRUCTION DETAILS" BOOKLET DATED 2016 AND "ELECTRICAL BUREAU STANDARD DETAILS, 2007" AND ALL BASELINE DOCUMENT CHANGES MADE TO THESE CONSTRUCTION DETAILS, SHALL GOVERN, EXCEPT FOR THOSE DETAILS CONTAINED HEREIN.

BENCHMARK: FOUND BENT REBAR IN THE NORTHERN CORNER OF THE INTERSECTION AT POMONA AVENUE, LOT 1.03 #672 Pomona AVENUE, NO CAP ELEV. 53.02

REPRODUCTION, ALTERATION AND AMENDMENT OF THIS PLAN SHALL BE PERFORMED ONLY BY KEI ASSOCIATES, P.A. AND SHALL BE PERFORMED UNDER THE ABSOLUTE DIRECTION OF THE LICENSED PROFESSIONAL WHOSE NAME AND SIGNATURE APPEARS HEREON.

PROFESSIONAL ENGINEERS, LAND SURVEYORS AND PLANNERS
 80 S. WHITE HORSE PIKE, BERLIN, NEW JERSEY 08009 (856) 767-6111
 FAX: (856) 753-1091, www.keiassociates.com

DATE: 3/23/22

REV. DATE. DESCRIPTION. DRWN. CHKD.

Base Bid 'B' - Construction Plan

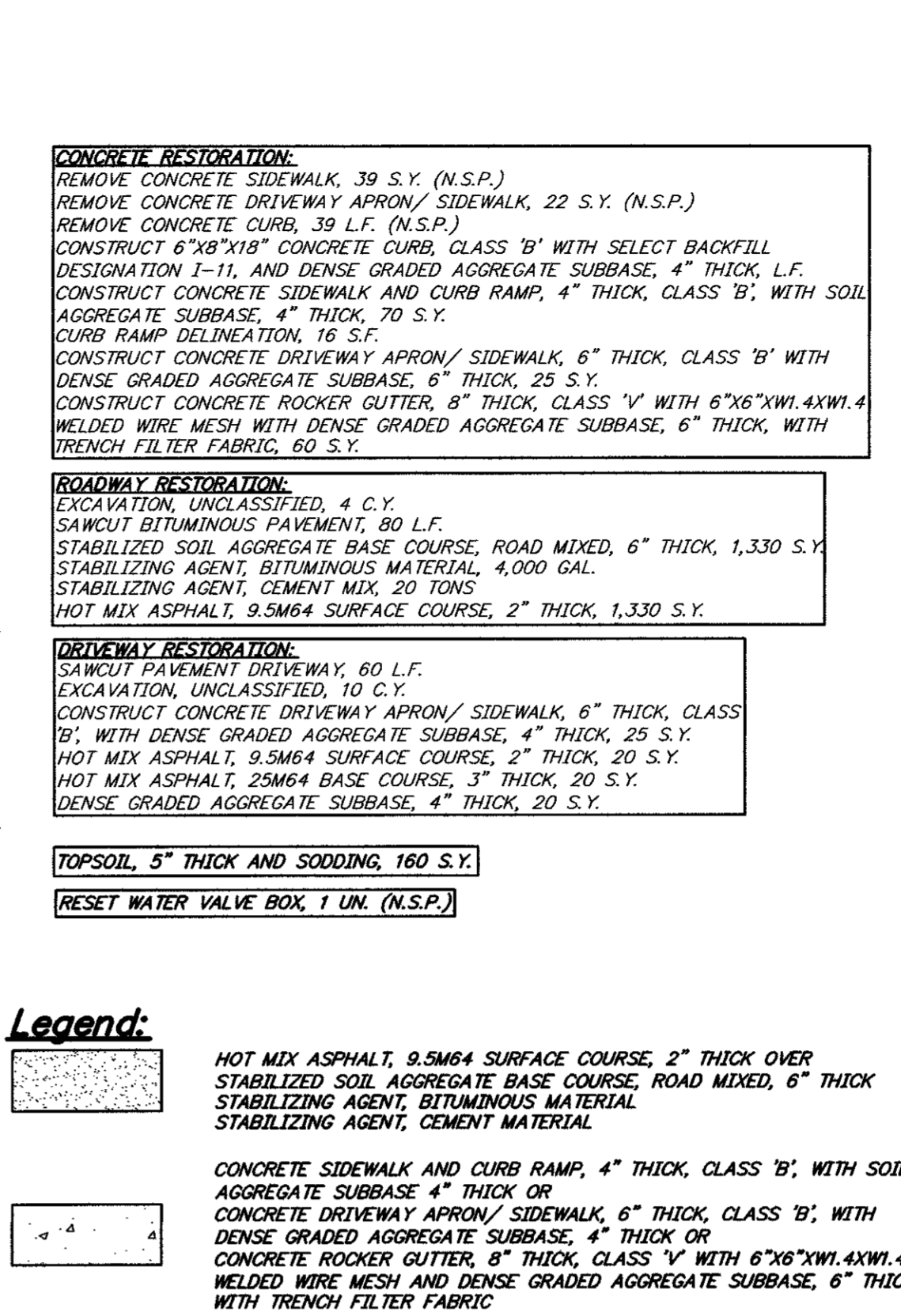
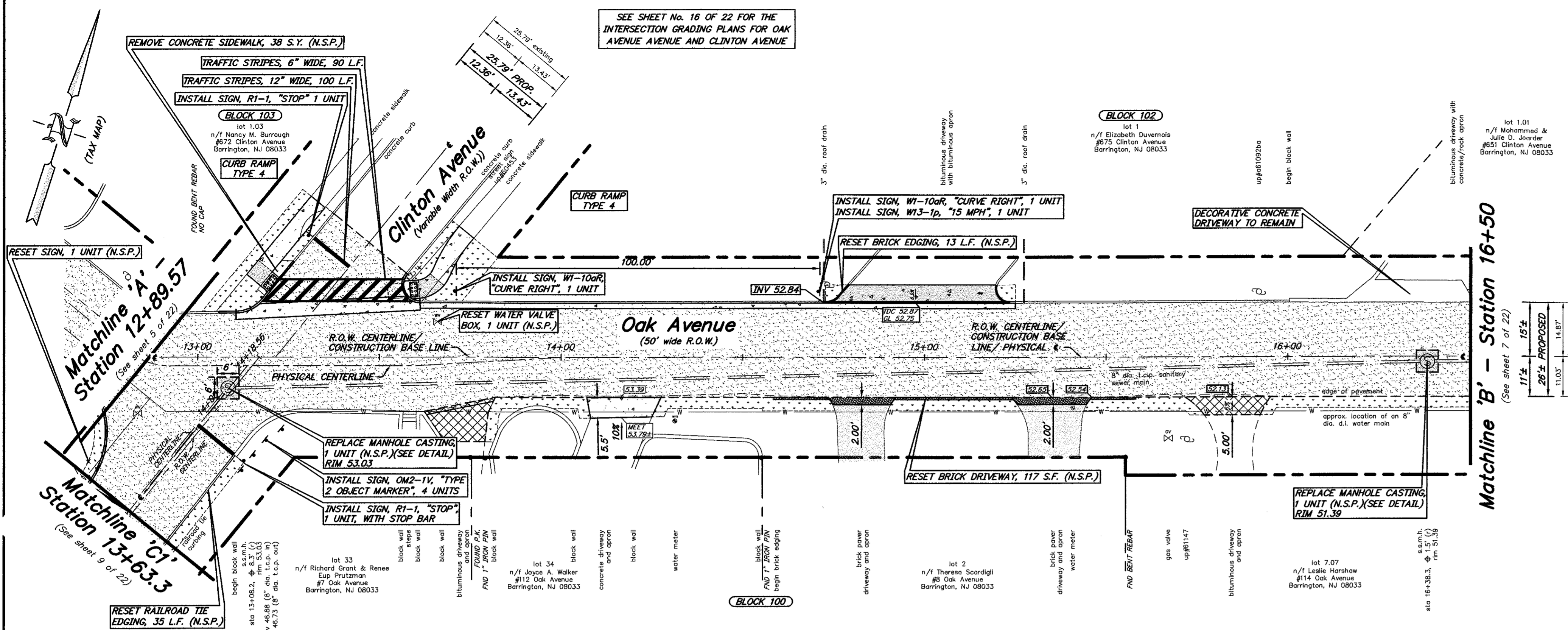
2021 Road Improvement Program
 Reconstruction of Oak Avenue from
 Pomona Avenue to Farragut Avenue

Borough of Barrington
 Camden County, New Jersey

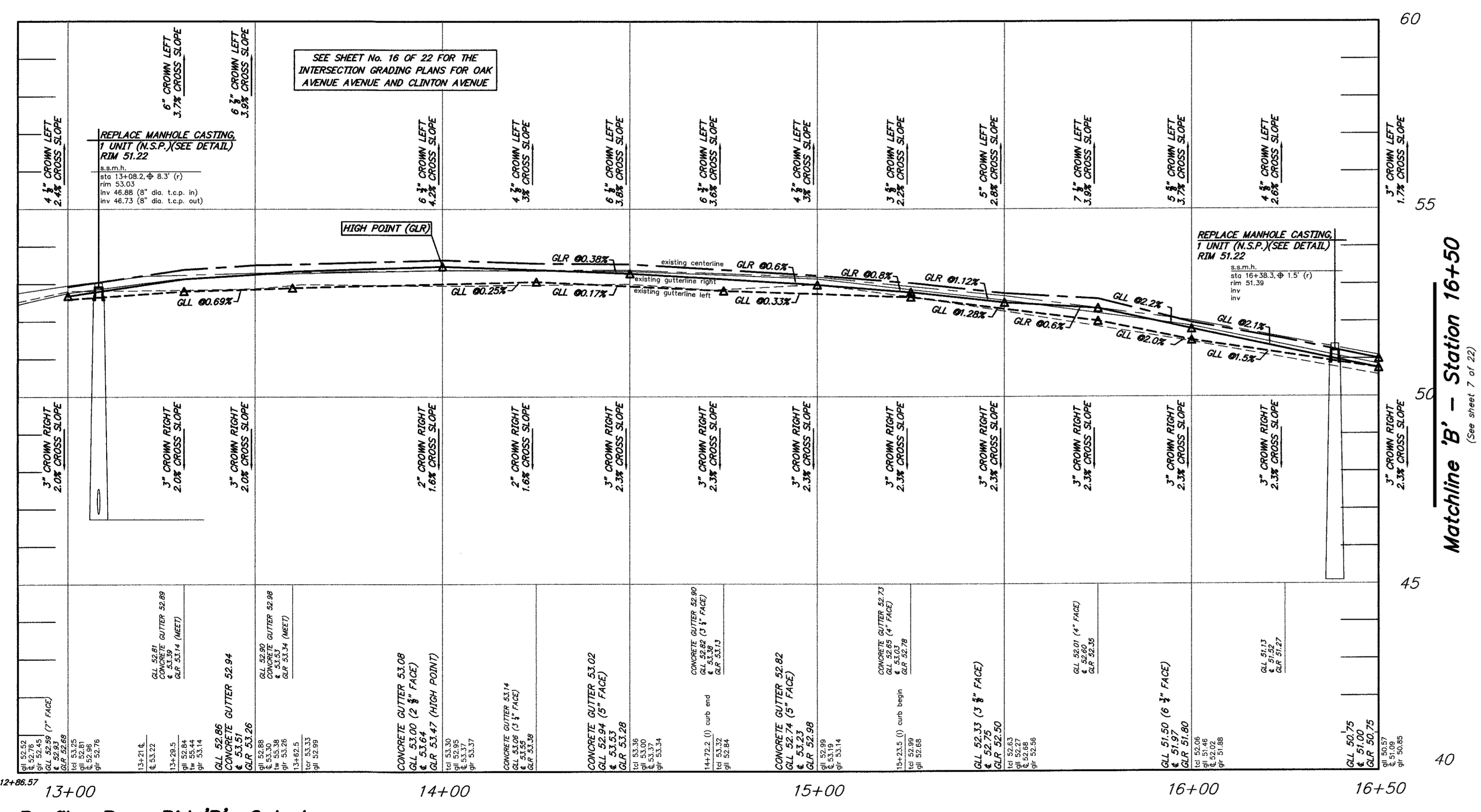
DATE: 12/03/2021 DRAWN BY: S.H. CHKD. BY: SCALE: AS NOTED
 PROJECT No. 11-4628R0521 FIELD BOOK/PAGE: SHEET No. 5 OF 22

GREGORY BLASE FUSCO
 PROFESSIONAL ENGINEER
 NJPE No. 32853 PA.PE No. 036608-E
 NJ PROFESSIONAL PLANNER No. 4076

KEI ASSOCIATES, P.A.



Plan: Base Bid 'B': Oak Avenue
scale: 1" = 20'



Profile: Base Bid 'B': Oak Avenue
scale: horizontal: 1 inch = 20 feet
vertical: 1 inch = 2 feet

CONCRETE RESTORATION:
REMOVE CONCRETE SIDEWALK, 39 S.Y. (N.S.P.)
REMOVE CONCRETE DRIVEWAY APRON/ SIDEWALK, 22 S.Y. (N.S.P.)
REMOVE CONCRETE CURB, 39 L.F. (N.S.P.)
CONSTRUCT 6"x8" CONCRETE CURB, CLASS 'B' WITH SELECT BACKFILL DESIGNATION I-11, AND DENSE GRADED AGGREGATE SUBBASE, 4" THICK, L.F.
CONSTRUCT CONCRETE SIDEWALK AND CURB RAMP, 4" THICK, CLASS 'B' WITH SOIL AGGREGATE SUBBASE, 4" THICK, 70 S.Y.
CURB RAMP DELINEATION, 15 S.F.
CONSTRUCT CONCRETE DRIVEWAY APRON/ SIDEWALK, 6" THICK, CLASS 'B' WITH DENSE GRADED AGGREGATE SUBBASE, 6" THICK, 25 S.Y.
CONSTRUCT CONCRETE ROCKER GUTTER, 8" THICK, CLASS 'V' WITH 6"x8"x1/4"x1/4" WELDED WIRE MESH WITH DENSE GRADED AGGREGATE SUBBASE, 6" THICK, WITH TRENCH FILTER FABRIC, 60 S.Y.

ROADWAY RESTORATION:
EXCAVATION, UNCLASSIFIED, 4 C.Y.
SAWCUT BITUMINOUS PAVEMENT, 80 L.F.
STABILIZED SOIL AGGREGATE BASE COURSE, ROAD MIXED, 6" THICK, 1,330 S.Y.
STABILIZING AGENT, BITUMINOUS MATERIAL, 4,000 GAL.
AGGREGATE SUBBASE, 6" THICK AND TRENCH FILTER FABRIC
HOT MIX ASPHALT, 9.5M64 SURFACE COURSE, 2" THICK, 1,330 S.Y.

DRIVEWAY RESTORATION:
SAWCUT PAVEMENT DRIVEWAY, 60 L.F.
EXCAVATION, UNCLASSIFIED, 10 C.Y.
CONSTRUCT CONCRETE DRIVEWAY APRON/ SIDEWALK, 6" THICK, CLASS 'B' WITH DENSE GRADED AGGREGATE SUBBASE, 4" THICK, 25 S.Y.
HOT MIX ASPHALT, 9.5M64 SURFACE COURSE, 2" THICK, 20 S.Y.
HOT MIX ASPHALT, 25M64 BASE COURSE, 3" THICK, 20 S.Y.
DENSE GRADED AGGREGATE SUBBASE, 4" THICK, 20 S.Y.

TOPSOIL, 5" THICK AND SODDING, 160 S.Y.
RESET WATER VALVE BOX, 1 UN. (N.S.P.)

Legend:

- HOT MIX ASPHALT, 9.5M64 SURFACE COURSE, 2" THICK OVER STABILIZED SOIL AGGREGATE BASE COURSE, ROAD MIXED, 6" THICK STABILIZING AGENT, BITUMINOUS MATERIAL
- CONCRETE SIDEWALK AND CURB RAMP, 4" THICK, CLASS 'B', WITH SOIL AGGREGATE SUBBASE 4" THICK OR CONCRETE DRIVEWAY APRON/ SIDEWALK, 6" THICK, CLASS 'B', WITH DENSE GRADED AGGREGATE SUBBASE, 4" THICK OR CONCRETE ROCKER GUTTER, 8" THICK, CLASS 'V' WITH 6"x8"x1/4"x1/4" WELDED WIRE MESH AND DENSE GRADED AGGREGATE SUBBASE, 6" THICK, WITH TRENCH FILTER FABRIC
- SAWCUT BITUMINOUS PAVEMENT DRIVEWAY EXCAVATION, UNCLASSIFIED
- CONCRETE DRIVEWAY APRON/ SIDEWALK, 6" THICK, CLASS 'B', WITH DENSE GRADED AGGREGATE SUBBASE, 4" THICK
- SAWCUT BITUMINOUS PAVEMENT DRIVEWAY EXCAVATION, UNCLASSIFIED
- HOT MIX ASPHALT, 9.5M64 SURFACE COURSE, 2" THICK
- HOT MIX ASPHALT, 25M64 BASE COURSE, 3" THICK
- DENSE GRADED AGGREGATE SUBBASE, 4" THICK
- TOPSOIL, 5" THICK AND SODDING
- 6"x8"x18" CONCRETE CURB, CLASS 'B' WITH SELECT BACKFILL DESIGNATION I-11, AND DENSE GRADED AGGREGATE SUBBASE, 4" THICK

ALL CURB RAMPS CONSTRUCTED SHALL MEET THE PROPOSED ACCESSIBILITY GUIDELINES FOR PEDESTRIAN FACILITIES IN THE PUBLIC RIGHT-OF-WAY, DATED JULY 26, 2011

THE CONTRACTOR SHALL UTILIZE THE EXISTING ROADWAY AS A CONSTRUCTION ENTRANCE. THE ROADWAY SHALL BE CLEANED AS NEEDED OR AS DIRECTED BY THE CAMDEN COUNTY SOIL CONSERVATION DISTRICT AND THE BOROUGH ENGINEER, TO ELIMINATE TRAFFIC HAZARDS, DUST, ETC. (SEE SOIL CONSERVATION NOTES), LUMP SUM (N.S.P.)

ALL CONCRETE SIDEWALK DESIGNATED FOR REMOVAL SHALL BE REMOVED TO THE NEAREST EXPANSION JOINT. IN LOCATIONS WHERE NO JOINTS EXIST, THE CONCRETE SIDEWALK SHALL BE SAWCUT VERTICALLY, TO ALLOW FOR THE REMOVAL OF THE EXISTING SIDEWALK.

CRUSHED OR RECYCLED CONCRETE OR CRUSHED/ OR RECYCLED ASPHALT WILL NOT BE ACCEPTED AS A SUBSTITUTE TO DENSE GRADED AGGREGATE FOR THIS PROJECT

(N.S.P.) INDICATES NO SPECIFIC PAYMENT WILL BE MADE FOR THE ITEM. THE COST SHALL BE INCLUDED IN VARIOUS ITEMS IN THE PROPOSAL

THE CONTRACTOR SHALL NOT ENTER ONTO ANY PRIVATE PROPERTIES WITHOUT RECEIVING A "CONSENT TO ENTER AGREEMENT" FROM THE PROPERTY OWNER

SHOULD POLICE TRAFFIC DIRECTORS BE REQUIRED, THEIR SERVICES SHALL BE PAID FOR BY THE BOROUGH, AT NO COST TO THE CONTRACTOR. HOWEVER, THE CONTRACTOR MUST STILL PROVIDE AT HIS COST, MAINTENANCE AND PROTECTION OF TRAFFIC IN ACCORDANCE WITH THE SPECIFICATIONS. 24-HOUR ROAD CLOSINGS WILL NOT BE PERMITTED, UNLESS APPROVED BY THE CHIEF OF POLICE.

Base Bid 'B': Reconstruction of Oak Avenue from Pomona Avenue to Farragut Avenue & the dead end sections of Pomona Avenue and Clinton Avenue (FUNDED BY THE BOROUGH OF BARRINGTON)

Payment Items:

ITEM NUMBER	DESCRIPTION	UNIT MEASURED	QUANTITY SHEET No. 6
1	EXCAVATION, UNCLASSIFIED	C.Y.	14
2	SAWCUT BITUMINOUS PAVEMENT	L.F.	80
3	SAWCUT BITUMINOUS PAVEMENT DRIVEWAY	L.F.	60
4	TYPE 'A' INLET, WITH SELECT BACKFILL DESIGNATION I-11, No. 8 STONE BEDDING AND TRENCH FILTER FABRIC	UNIT	0
5	SUBSURFACE UNDERDRAIN SYSTEM, COMPLETE	L.F.	0
6	6"x8"x18" CONCRETE CURB, CLASS 'B' WITH SELECT BACKFILL, DESIGNATION I-11 AND DENSE GRADED AGGREGATE SUBBASE, 4" THICK	L.F.	70
7	CONCRETE ROCKER GUTTER, 8" THICK, CLASS 'V' WITH 6"x8"x1/4"x1/4" WELDED WIRE MESH AND DENSE GRADED AGGREGATE SUBBASE, 6" THICK AND TRENCH FILTER FABRIC	L.F.	60
8	CONCRETE SIDEWALK AND CURB RAMP, 4" THICK, CLASS 'B' WITH SOIL AGGREGATE SUBBASE, 4" THICK	S.Y.	35
9	CONCRETE DRIVEWAY APRON/ SIDEWALK, 6" THICK, CLASS 'B' WITH DENSE GRADED AGGREGATE SUBBASE, 4" THICK	S.Y.	25
10	DETECTABLE WARNING SURFACE	S.F.	16
11	STABILIZED SOIL AGGREGATE BASE COURSE, ROAD MIXED, 6" THICK	S.Y.	1,330
12	STABILIZING AGENT, BITUMINOUS MATERIAL	GAL.	4,000
13	STABILIZING AGENT, CEMENT MATERIAL	TONS	20
14	DENSE GRADED AGGREGATE SUBBASE, 4" THICK (DRIVEWAY)	S.Y.	20
15	HOT MIX ASPHALT, 25M64 BASE COURSE, 3" THICK (DRIVEWAY)	S.Y.	20
16	HOT MIX ASPHALT, 9.5M64 SURFACE COURSE, 2" THICK	S.Y.	1,350
17	TRAFFIC STRIPES, 6" WIDE	L.F.	90
18	TRAFFIC STRIPES, 12" WIDE	L.F.	120
19	SIGN	UNIT	8
20	TOPSOIL, 5" THICK AND SODDING	UNIT	160
21	ASPHALT PRICE ADJUSTMENT	L.S.	L.S.
22	FUEL PRICE ADJUSTMENT	L.S.	L.S.

No Specific Payment Items:

ITEM NUMBER	DESCRIPTION	UNIT MEASURED	QUANTITY SHEET No. 6
A	SOIL EROSION AND SEDIMENT CONTROL	N.S.P.	N.S.P.
B	REMOVE CONCRETE SIDEWALK	S.Y.	39
C	REMOVE CONCRETE DRIVEWAY APRON/ SIDEWALK	S.Y.	22
D	REMOVE CONCRETE CURB	S.Y.	22
E	REPLACE MANHOLE CASTING	UNIT	2
F	CLEANOUT PROTECTION BOX	UNIT	0
G	RESET BRICK DRIVEWAY	S.F.	117
H	RESET BRICK SIDEWALK	S.F.	10
I	RESET BRICK EDGING	L.F.	13
J	RESET COBBLESTONE CURB EDGING	L.F.	0
K	RESET GRANITE BLOCK LANDSCAPING	L.F.	0
L	RESET RAILROAD TIE EDGING	L.F.	35
M	RESET STONE LANDSCAPE AREA	S.F.	0
N	RESET SLATE WALKWAY	S.F.	0
O	RESET SIGN	UNIT	1
P	RESET GAS VALVE BOX	UNIT	0
Q	RESET WATER VALVE BOX	UNIT	1
R	RESET WATER METER PIT	UNIT	0
S	REMOVE SIGN	UNIT	1
T	TRIM VEGETATION	S.F.	0
U	JOINT SEALER	L.F.	85
V	CONCRETE SEALING	N.S.P.	N.S.P.
W	WATERING	N.S.P.	N.S.P.
X	MAINTENANCE AND PROTECTION OF VEHICULAR AND PEDESTRIAN TRAFFIC	N.S.P.	N.S.P.

CONSTRUCTION AND MATERIALS SHALL CONFORM TO THE DEPARTMENT'S STANDARD SPECIFICATIONS FOR ROAD AND BRIDGE CONSTRUCTION, 2019 EDITION, WHICH IS INCORPORATED HEREIN BY REFERENCE, AS AMENDED AND SUPPLEMENTED, AND THE DEPARTMENT'S SUPPLEMENTARY SPECIFICATIONS FOR STATE AID PROJECTS, 2019 EDITION, WHICH IS INCORPORATED HEREIN BY REFERENCE, AS AMENDED AND SUPPLEMENTED. STANDARD CONSTRUCTION DETAILS SHALL CONFORM TO THE LATEST REQUIREMENTS OF THE DEPARTMENT OF TRANSPORTATION, THE NEW JERSEY DEPARTMENT OF TRANSPORTATION "STANDARD ROADWAY CONSTRUCTION/ TRAFFIC CONTROL/ BRIDGE CONSTRUCTION DETAILS" BOOKLET DATED 2016 AND "ELECTRICAL BUREAU STANDARD DETAILS, 2007" AND ALL BASELINE DOCUMENT CHANGES MADE TO THESE CONSTRUCTION DETAILS, SHALL GOVERN, EXCEPT FOR THOSE DETAILS CONTAINED HEREIN.

BENCHMARK:
FOUND BENT REBAR IN THE NORTHERN CORNER OF THE INTERSECTION AT CLINTON AVENUE, LOT 1.03 #672 CLINTON AVENUE, NO CAP ELEV. 53.02

REPRODUCTION, ALTERATION AND AMENDMENT OF THIS PLAN SHALL BE PERFORMED ONLY BY KEI ASSOCIATES, P.A. AND SHALL BE PERFORMED UNDER THE ABSOLUTE DIRECTION OF THE LICENSED PROFESSIONAL WHOSE NAME AND SIGNATURE APPEARS HEREON.

KEI ASSOCIATES, P.A.
PROFESSIONAL ENGINEERS, LAND SURVEYORS AND PLANNERS
80 S. WHITE HORSE Pkwy, BERLIN, NEW JERSEY 08009 (856) 767-6111
FAX: (856) 753-1091, www.keiassociates.com

DATE: 3/27/22

REV.	DATE:	DESCRIPTION	DRWN.	CHKD.
Base Bid 'B' - Construction Plan				
2021 Road Improvement Program Reconstruction to Oak Avenue from Pomona Avenue to Farragut Avenue				
Borough of Barrington Camden County, New Jersey				
DATE: 12/03/2021	DRAWN BY: S.H.	CHKD. BY:	SCALE: AS NOTED	
PROJECT No. 11-462BROS21	FIELD BOOK/PAGE:	SHEET No. 6 OF 22		
GREGORY BLASE FUSCO PROFESSIONAL ENGINEER				
NJPE No. 32853		P.A. PE No. 036608-E NJ PROFESSIONAL PLANNER No. 4076		

Base Bid 'B':
Reconstruction Of Oak Avenue from Pomona Avenue to
Farragut Avenue & the dead end sections of Pomona Avenue
and Clinton Avenue
 (FUNDED BY THE BOROUGH OF BARRINGTON)

Payment Items:

ITEM NUMBER	DESCRIPTION	UNIT MEASURED	QUANTITY SHEET No. 7
1	EXCAVATION, UNCLASSIFIED	C.Y.	12
2	SAWCUT BITUMINOUS PAVEMENT	L.F.	35
3	SAWCUT BITUMINOUS PAVEMENT DRIVEWAY	L.F.	50
4	TYPE 'A' INLET, WITH SELECT BACKFILL DESIGNATION I-11, No. 8 STONE BEDDING AND TRENCH FILTER FABRIC	UNIT	0
5	SUBSURFACE UNDERDRAIN SYSTEM, COMPLETE	L.F.	0
6	6"X8"X18" CONCRETE CURB, CLASS 'B' WITH SELECT BACKFILL, DESIGNATION I-11 AND DENSE GRADED AGGREGATE SUBBASE, 4" THICK	L.F.	0
7	CONCRETE ROCKER GUTTER, 8" THICK, CLASS 'V' WITH 6"X8"X18"X18" 4 WELDED WIRE MESH AND DENSE GRADED AGGREGATE SUBBASE, 6" THICK AND TRENCH FILTER FABRIC	L.F.	0
8	CONCRETE SIDEWALK AND CURB RAMP, 4" THICK, CLASS 'B' WITH SOIL AGGREGATE SUBBASE, 4" THICK	S.Y.	0
9	CONCRETE DRIVEWAY APRON/ SIDEWALK, 6" THICK, CLASS 'B' WITH DENSE GRADED AGGREGATE SUBBASE, 4" THICK	S.Y.	0
10	DETECTABLE WARNING SURFACE	S.F.	0
11	STABILIZED SOIL AGGREGATE BASE COURSE, ROAD MIXED, 6" THICK	S.Y.	580
12	STABILIZING AGENT, BITUMINOUS MATERIAL	GAL.	1860
13	STABILIZING AGENT, CEMENT MATERIAL	TONS	3
14	DENSE GRADED AGGREGATE SUBBASE, 4" THICK (DRIVEWAY)	S.Y.	30
15	HOT MIX ASPHALT, 25M64 BASE COURSE, 3" THICK (DRIVEWAY)	S.Y.	30
16	HOT MIX ASPHALT, 9.5M64, SURFACE COURSE, 2" THICK	S.Y.	610
17	TRAFFIC STRIPES, 6" WIDE	L.F.	0
18	TRAFFIC STRIPES, 12" WIDE	L.F.	0
19	SIGN	UNIT	0
20	TOPSOIL, 5" THICK AND SODDING	UNIT	80
21	ASPHALT PRICE ADJUSTMENT	L.S.	L.S.
22	FUEL PRICE ADJUSTMENT	L.S.	L.S.

No Specific Payment Items:

ITEM NUMBER	DESCRIPTION	UNIT MEASURED	QUANTITY SHEET No. 7
A	SOIL EROSION AND SEDIMENT CONTROL	N.S.P.	N.S.P.
B	REMOVE CONCRETE SIDEWALK	S.Y.	0
C	REMOVE CONCRETE DRIVEWAY APRON/ SIDEWALK	S.Y.	0
D	REMOVE CONCRETE CURB	S.Y.	0
E	REPLACE MANHOLE CASTING	UNIT	0
F	CLEANOUT PROTECTION BOX	UNIT	0
G	RESET BRICK DRIVEWAY	S.F.	0
H	RESET BRICK SIDEWALK	S.F.	0
I	RESET BRICK EDGING	L.F.	0
J	RESET COBBLESTONE CURB EDGING	L.F.	0
K	RESET GRANITE BLOCK LANDSCAPING	L.F.	0
L	RESET RAILROAD TIE EDGING	L.F.	0
M	RESET STONE LANDSCAPE AREA	S.F.	150
N	RESET SLATE WALKWAY	S.F.	0
O	RESET SIGN	UNIT	0
P	RESET GAS VALVE BOX	UNIT	0
Q	RESET WATER VALVE BOX	UNIT	0
R	RESET WATER METER PIT	UNIT	0
S	REMOVE SIGN	UNIT	0
T	TRIM VEGETATION	S.F.	0
U	JOINT SEALER	L.F.	80
V	CONCRETE SEALING	N.S.P.	N.S.P.
W	WATERING	N.S.P.	N.S.P.
X	MAINTENANCE AND PROTECTION OF VEHICULAR AND PEDESTRIAN TRAFFIC	N.S.P.	N.S.P.

ROADWAY RESTORATION:
 SAWCUT BITUMINOUS PAVEMENT, 35 L.F.
 STABILIZED SOIL AGGREGATE BASE COURSE, ROAD MIXED, 6" THICK, 580 S.Y.
 STABILIZING AGENT, BITUMINOUS MATERIAL, 1,860 GAL.
 STABILIZING AGENT, CEMENT MATERIAL, 3 TONS
 HOT MIX ASPHALT, 9.5M64 SURFACE COURSE, 2" THICK, 580 S.Y.

DRIVEWAY RESTORATION:
 EXCAVATION, UNCLASSIFIED, 12 C.Y.
 SAWCUT PAVEMENT DRIVEWAY, 50 L.F.
 HOT MIX ASPHALT, 9.5M64 SURFACE COURSE, 2" THICK, 30 S.Y.
 HOT MIX ASPHALT, 25M64 BASE COURSE, 3" THICK, 30 S.Y.
 DENSE GRADED AGGREGATE SUBBASE, 4" THICK, 30 S.Y.

Legend:

[Pattern] HOT MIX ASPHALT, 9.5M64 SURFACE COURSE, 2" THICK OVER STABILIZED SOIL AGGREGATE BASE COURSE, ROAD MIXED, 6" THICK, 6" STABILIZING AGENT, BITUMINOUS MATERIAL, CEMENT MATERIAL

[Pattern] SAWCUT BITUMINOUS PAVEMENT DRIVEWAY

[Pattern] EXCAVATION, UNCLASSIFIED

[Pattern] HOT MIX ASPHALT, 9.5M64 SURFACE COURSE, 2" THICK

[Pattern] HOT MIX ASPHALT, 25M64 BASE COURSE, 3" THICK

[Pattern] DENSE GRADED AGGREGATE SUBBASE, 4" THICK

[Pattern] TOPSOIL, 5" THICK AND SODDING

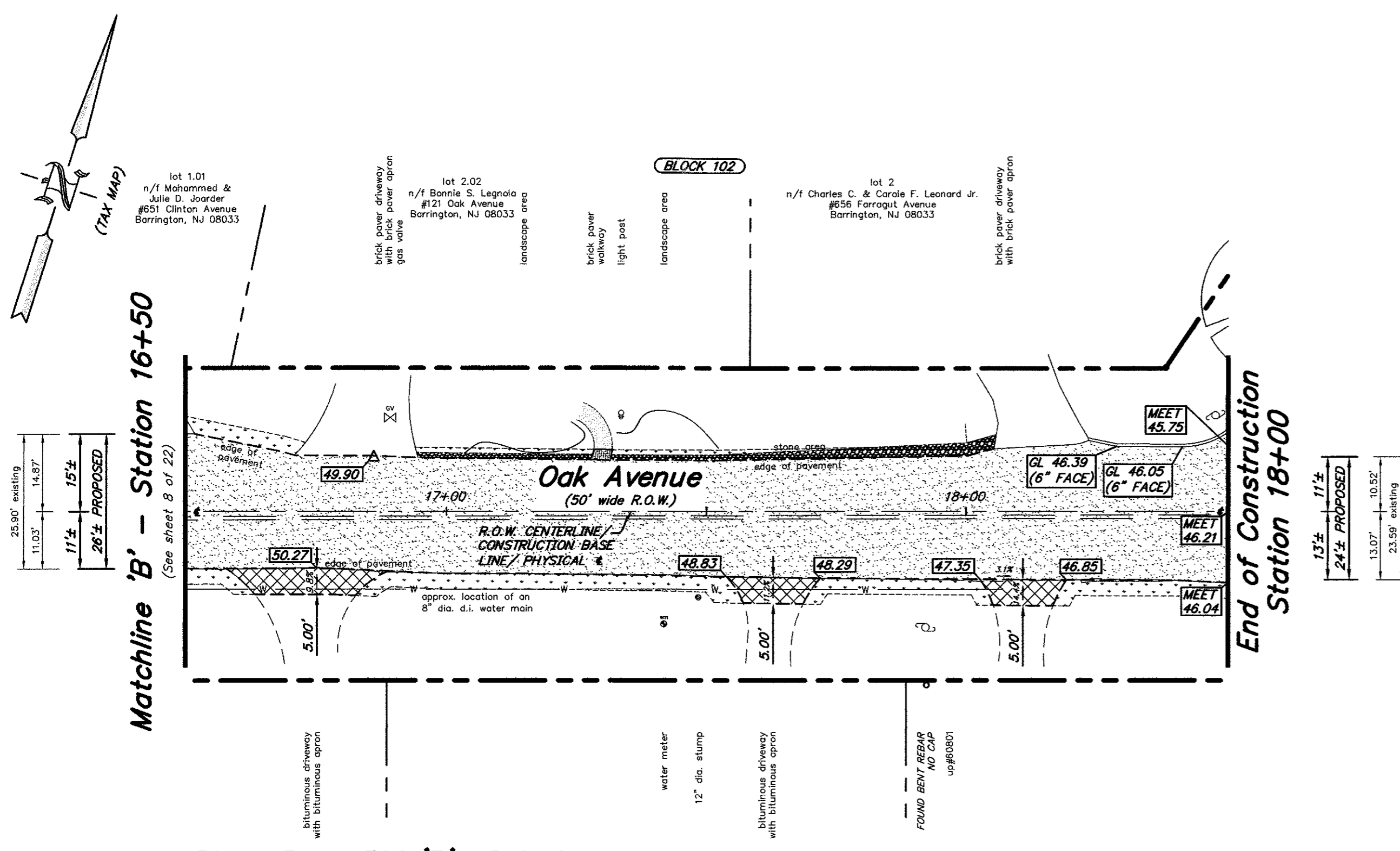
THE CONTRACTOR SHALL UTILIZE THE EXISTING ROADWAY AS A CONSTRUCTION ENTRANCE. THE ROADWAY SHALL BE CLEANED AS NEEDED OR AS DIRECTED BY THE CAMDEN COUNTY SOIL CONSERVATION DISTRICT AND THE BOROUGH ENGINEER, TO ELIMINATE TRAFFIC HAZARDS, DUST, ETC. (see soil conservation notes), LUMP SUM (N.S.P.).

CRUSHED OR RECYCLED CONCRETE OR CRUSHED OR RECYCLED ASPHALT WILL NOT BE ACCEPTED AS A SUBSTITUTE TO DENSE GRADED AGGREGATE FOR THIS PROJECT

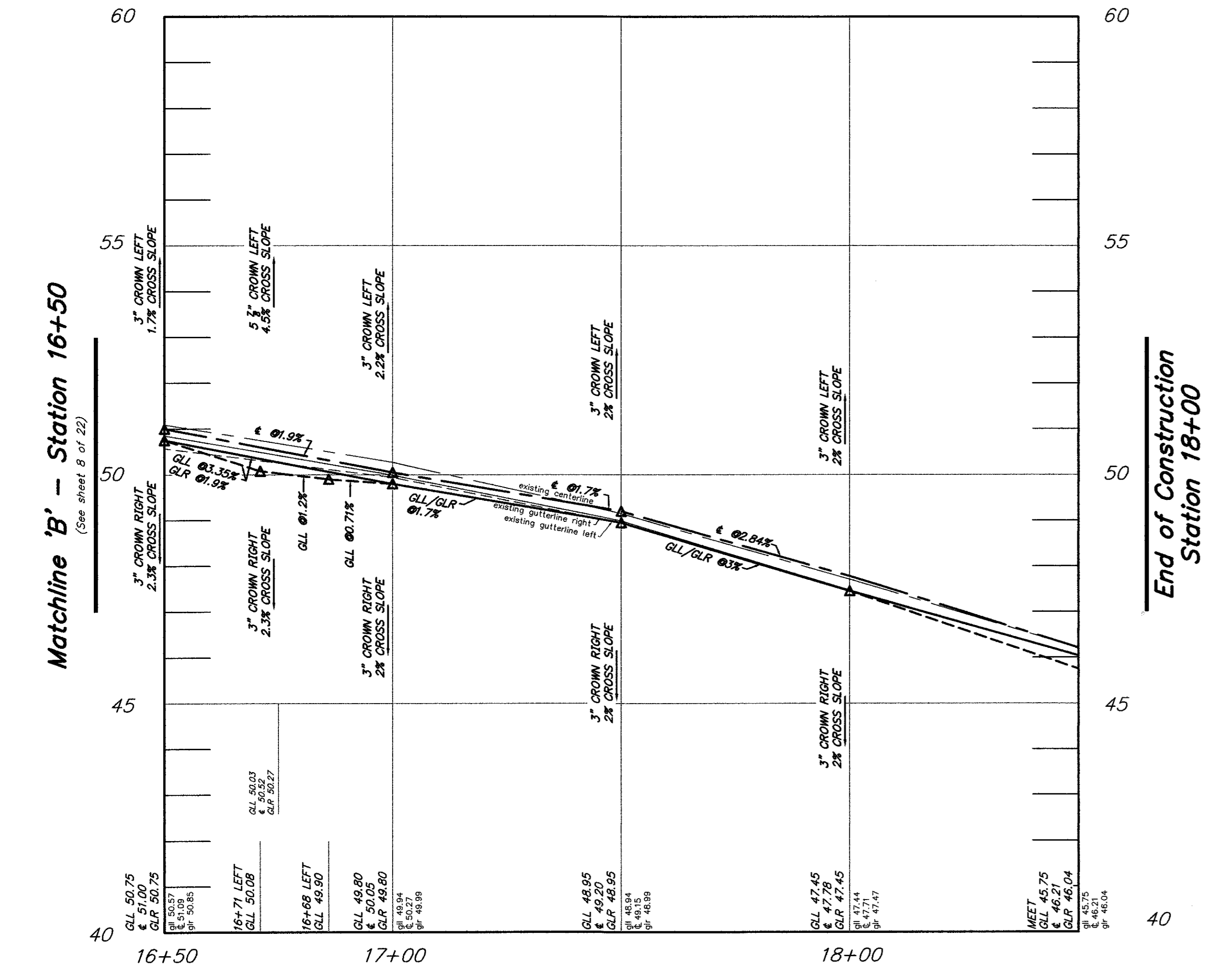
(N.S.P.) INDICATES NO SPECIFIC PAYMENT WILL BE MADE FOR THE ITEM. THE COST SHALL BE INCLUDED IN VARIOUS ITEMS IN THE PROPOSAL

THE CONTRACTOR SHALL NOT ENTER ONTO ANY PRIVATE PROPERTIES WITHOUT RECEIVING A "CONSENT TO ENTER AGREEMENT" FROM THE PROPERTY OWNER

SHOULD POLICE TRAFFIC DIRECTORS BE REQUIRED, THEIR SERVICES SHALL BE PAID FOR BY THE BOROUGH, AT NO COST TO THE CONTRACTOR. HOWEVER, THE CONTRACTOR MUST STILL PROVIDE, AT HIS COST, MAINTENANCE AND PROTECTION OF TRAFFIC IN ACCORDANCE WITH THE SPECIFICATIONS. 24-HOUR ROAD CLOSINGS WILL NOT BE PERMITTED, UNLESS APPROVED BY THE CHIEF OF POLICE.



Plan: Base Bid 'B': Oak Avenue
 scale: 1" = 20'



Profile: Base Bid 'B': Oak Avenue
 scale: horizontal: 1 inch = 20 feet
 vertical: 1 inch = 2 feet

CONSTRUCTION AND MATERIALS SHALL CONFORM TO THE DEPARTMENT'S STANDARD SPECIFICATIONS FOR ROAD AND BRIDGE CONSTRUCTION, 2019 EDITION, WHICH IS INCORPORATED HEREIN BY REFERENCE, AS AMENDED AND SUPPLEMENTED, AND THE DEPARTMENT'S SUPPLEMENTARY SPECIFICATIONS FOR STATE AID PROJECTS, 2019 EDITION, WHICH IS INCORPORATED HEREIN BY REFERENCE, AS AMENDED AND SUPPLEMENTED. STANDARD CONSTRUCTION DETAILS SHALL CONFORM TO THE LATEST REQUIREMENTS OF THE DEPARTMENT OF TRANSPORTATION "STANDARD ROADWAY CONSTRUCTION/ TRAFFIC CONTROL/ BRIDGE CONSTRUCTION DETAILS" BOOKLET DATED 2016 AND "ELECTRICAL BUREAU STANDARD DETAILS, 2007" AND ALL BASELINE DOCUMENT CHANGES MADE TO THESE CONSTRUCTION DETAILS, SHALL GOVERN, EXCEPT FOR THOSE DETAILS CONTAINED HEREIN.

BENCHMARK: FOUND BENT REBAR IN THE NORTHERN CORNER OF THE INTERSECTION AT CLINTON AVENUE, LOT 1.03 #672 CLINTON AVENUE, NO CAP ELEV. 53.02

REPRODUCTION, ALTERATION AND AMENDMENT OF THIS PLAN SHALL BE PERFORMED ONLY BY KEI ASSOCIATES, P.A. AND SHALL BE PERFORMED UNDER THE ABSOLUTE DIRECTION OF THE LICENSED PROFESSIONAL WHOSE NAME AND SIGNATURE APPEARS HEREON.

PROFESSIONAL ENGINEERS, LAND SURVEYORS AND PLANNERS
 80 S. WHITE HORSE PIKE, BERLIN, NEW JERSEY 08009 (856) 767-8111
 FAX: (856) 753-1091, www.keiassociates.com

DATE: 5/29/22



REV.	DATE:	DESCRIPTION	DRWN.	CHKD.
Base Bid 'B' - Construction Plan				
2021 Road Improvement Program Reconstruction of Oak Avenue from Pomona Avenue to Farragut Avenue				
Borough of Barrington Camden County, New Jersey				
DATE: 12/03/2021	DRAWN BY: S.H.	CHKD. BY:	SCALE: AS NOTED	
PROJECT No. 11-462BR0521	FIELD BOOK/PAGE:	SHEET No. 7 OF 22		
GREGORY BLASE FUSCO PROFESSIONAL ENGINEER				
NJPE No. 32853		P.A.PE No. 036608-E NJ PROFESSIONAL PLANNER No. 4076		

Base Bid 'B':
Reconstruction Of Oak Avenue from Pomona Avenue to
Farragut Avenue & The Dead End sections of Pomona
Avenue and Clinton Avenue
 (FOUNDED BY THE BOROUGH OF BARRINGTON)
Payment Items:

ITEM NUMBER	DESCRIPTION	UNIT MEASURED	QUANTITY SHEET No. 8
1	EXCAVATION, UNCLASSIFIED	C.Y.	20
2	SAWCUT BITUMINOUS PAVEMENT	L.F.	50
3	SAWCUT BITUMINOUS PAVEMENT DRIVEWAY	L.F.	10
4	TYPE 'A' INLET, WITH SELECT BACKFILL DESIGNATION I-11, No. 8 STONE BEDDING AND TRENCH FILTER FABRIC, 1 UNIT	UNIT	2
5	SUBSURFACE UNDERDRAIN SYSTEM, COMPLETE	L.F.	14
6	6"X8"X18" CONCRETE CURB, CLASS 'B' WITH SELECT BACKFILL, DESIGNATION I-11 AND DENSE GRADED AGGREGATE SUBBASE, 4" THICK	L.F.	0
7	CONCRETE ROCKER GUTTER, 8" THICK, CLASS 'B' WITH 6"X8"X18" WELDED WIRE MESH AND DENSE GRADED AGGREGATE SUBBASE, 6" THICK AND TRENCH FILTER FABRIC	L.F.	0
8	CONCRETE SIDEWALK AND CURB RAMP, 4" THICK, CLASS 'B' WITH SOIL AGGREGATE SUBBASE, 4" THICK	S.Y.	0
9	CONCRETE DRIVEWAY APRON/ SIDEWALK, 6" THICK, CLASS 'B' WITH DENSE GRADED AGGREGATE SUBBASE, 4" THICK	S.Y.	0
10	DETECTABLE WARNING SURFACE	S.F.	0
11	STABILIZED SOIL AGGREGATE BASE COURSE, ROAD MIXED, 6" THICK	S.Y.	790
12	STABILIZING AGENT, BITUMINOUS MATERIAL	GAL.	2350
13	STABILIZING AGENT, CEMENT MATERIAL	TONS	5
14	DENSE GRADED AGGREGATE SUBBASE, 4" THICK (DRIVEWAY)	S.Y.	40
15	HOT MIX ASPHALT, 2.5M64 BASE COURSE, 3" THICK (DRIVEWAY)	S.Y.	25
16	HOT MIX ASPHALT, 9.5M64, SURFACE COURSE, 2" THICK	S.Y.	815
17	TRAFFIC STRIPES, 6" WIDE	L.F.	0
18	TRAFFIC STRIPES, 12" WIDE	L.F.	0
19	SIGN	UNIT	0
20	TOPSOIL, 5" THICK AND SOODING	UNIT	160
21	ASPHALT PRICE ADJUSTMENT	L.S.	L.S.
22	FUEL PRICE ADJUSTMENT	L.S.	L.S.

No Specific Payment Items:

ITEM NUMBER	DESCRIPTION	UNIT MEASURED	QUANTITY SHEET No. 8
A	SOIL EROSION AND SEDIMENT CONTROL	N.S.P.	N.S.P.
B	REMOVE CONCRETE SIDEWALK	S.Y.	0
C	REMOVE CONCRETE DRIVEWAY APRON/ SIDEWALK	S.Y.	0
D	REMOVE CONCRETE CURB	S.Y.	0
E	REPLACE MANHOLE CASTING	UNIT	1
F	CLEANOUT PROTECTION BOX	UNIT	0
G	RESET BRICK DRIVEWAY	S.F.	0
H	RESET BRICK SIDEWALK	S.F.	0
I	RESET BRICK EDGING	L.F.	0
J	RESET COBBLESTONE CURB EDGING	L.F.	0
K	RESET GRANITE BLOCK LANDSCAPING	L.F.	10
L	RESET RAILROAD TIE EDGING	L.F.	0
M	RESET STONE LANDSCAPE AREA	S.F.	0
N	RESET SLATE WALKWAY	S.F.	20
O	RESET SIGN	UNIT	2
P	RESET GAS VALVE BOX	UNIT	2
Q	RESET WATER VALVE BOX	UNIT	2
R	RESET WATER METER PIT	UNIT	1
S	REMOVE SIGN	UNIT	0
T	TRIM VEGETATION	S.F.	50
U	JOINT SEALER	L.F.	10
V	CONCRETE SEALING	N.S.P.	N.S.P.
W	WATERING	N.S.P.	N.S.P.
X	MAINTENANCE AND PROTECTION OF VEHICULAR AND PEDESTRIAN TRAFFIC	N.S.P.	N.S.P.

ROADWAY RESTORATION:
 EXCAVATION, UNCLASSIFIED, 10 C.Y.
 SAWCUT BITUMINOUS PAVEMENT, 50 L.F.
 STABILIZED SOIL AGGREGATE BASE COURSE, ROAD MIXED, 6" THICK, 790 S.Y.
 STABILIZING AGENT, BITUMINOUS MATERIAL, 2,350 GAL.
 STABILIZING AGENT, CEMENT MATERIAL, 5 TONS
 HOT MIX ASPHALT, 9.5M64 SURFACE COURSE, 2" THICK, 790 S.Y.

DRIVEWAY RESTORATION:
 SAWCUT PAVEMENT DRIVEWAY, 10 L.F.
 EXCAVATION, UNCLASSIFIED, 8 C.Y.
 HOT MIX ASPHALT, 9.5M64 SURFACE COURSE, 2" THICK, 25 S.Y.
 HOT MIX ASPHALT, 2.5M64 BASE COURSE, 3" THICK, 25 S.Y.
 DENSE GRADED AGGREGATE SUBBASE, 4" THICK, 40 S.Y.

TOPSOIL, 5" THICK AND SOODING, 160 S.Y.

RESET GAS VALVE BOX, 2 UN. (N.S.P.)
RESET WATER VALVE BOX, 2 UN. (N.S.P.)
RESET WATER METER PIT, 2 UN. (N.S.P.)

Legend:

- HOT MIX ASPHALT, 9.5M64 SURFACE COURSE, 2" THICK OVER STABILIZED SOIL AGGREGATE BASE COURSE, ROAD MIXED, 6" THICK STABILIZING AGENT, BITUMINOUS MATERIAL STABILIZING AGENT, CEMENT MATERIAL
- SUBSURFACE EXCAVATION, UNCLASSIFIED HOT MIX ASPHALT, 9.5M64 SURFACE COURSE, 2" THICK OVER STABILIZED SOIL AGGREGATE BASE COURSE, ROAD MIXED, 6" THICK STABILIZING AGENT, BITUMINOUS MATERIAL STABILIZING AGENT, CEMENT MATERIAL SELECTIVE DESIGNATION, I-11 SUBSURFACE UNDERDRAIN SYSTEM, COMPLETE
- SAWCUT BITUMINOUS PAVEMENT DRIVEWAY
- HOT MIX ASPHALT, 9.5M64 SURFACE COURSE, 2" THICK OVER STABILIZED SOIL AGGREGATE BASE COURSE, ROAD MIXED, 6" THICK HOT MIX ASPHALT, 2.5M64 BASE COURSE, 3" THICK DENSE GRADED AGGREGATE SUBBASE, 4" THICK
- TOPSOIL, 5" THICK AND SOODING
- TRIM VEGETATION
- TOPSOIL, 5" THICK AND SOODING
- DENSE GRADED AGGREGATE, 4" THICK (DRIVEWAY)

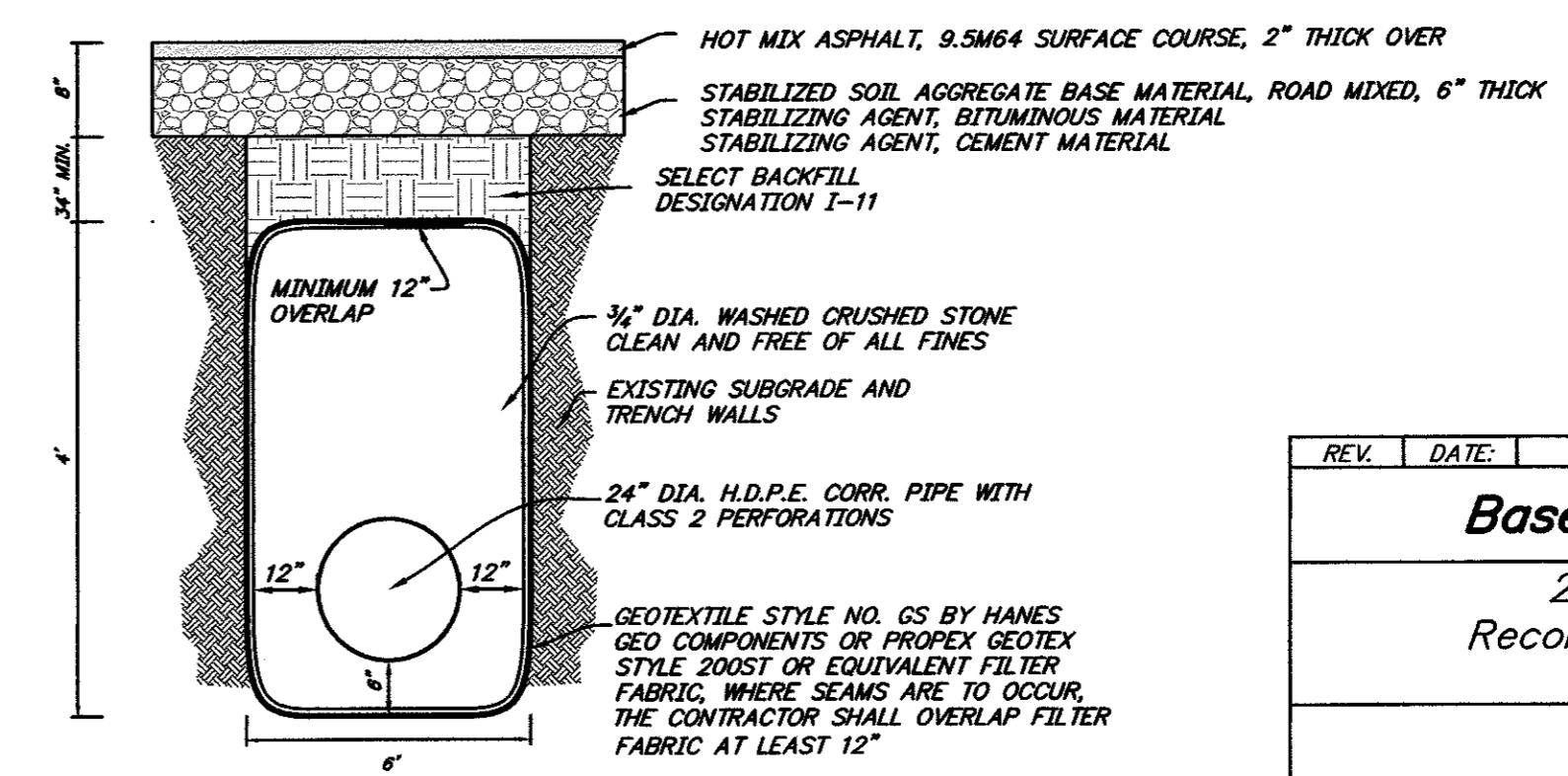
THE CONTRACTOR SHALL UTILIZE THE EXISTING ROADWAY AS A CONSTRUCTION ENTRANCE. THE ROADWAY SHALL BE CLEARED AS NEEDED OR AS DIRECTED BY THE CAMDEN COUNTY SOIL CONSERVATION DISTRICT AND THE BOROUGH ENGINEER, TO ELIMINATE TRAFFIC HAZARDS, DUST, ETC. (SEE SOIL CONSERVATION NOTES), LUMP SUM (N.S.P.).

CRUSHED OR RECYCLED CONCRETE OR CRUSHED OR RECYCLED ASPHALT WILL NOT BE ACCEPTED AS A SUBSTITUTE TO DENSE GRADED AGGREGATE FOR THIS PROJECT.

(N.S.P.) INDICATES NO SPECIFIC PAYMENT WILL BE MADE FOR THE ITEM. THE COST SHALL BE INCLUDED IN VARIOUS ITEMS IN THE PROPOSAL.

THE CONTRACTOR SHALL NOT ENTER ONTO ANY PRIVATE PROPERTIES WITHOUT RECEIVING A "CONSENT TO ENTER AGREEMENT" FROM THE PROPERTY OWNER.

SHOULD POLICE TRAFFIC DIRECTORS BE REQUIRED, THEIR SERVICES SHALL BE PAID FOR BY THE BOROUGH, AT NO COST TO THE CONTRACTOR. HOWEVER, THE CONTRACTOR MUST STILL PROVIDE, AT HIS COST, MAINTENANCE AND PROTECTION OF TRAFFIC IN ACCORDANCE WITH THE SPECIFICATIONS. 24 HOUR ROAD CLOSINGS WILL NOT BE PERMITTED, UNLESS APPROVED BY THE CHIEF OF POLICE.



REPRODUCTION, ALTERATION AND AMENDMENT OF THIS PLAN SHALL BE PERFORMED ONLY BY KEI ASSOCIATES, P.A. AND SHALL BE PERFORMED UNDER THE ABSOLUTE DIRECTION OF THE LICENSED PROFESSIONAL WHOSE NAME AND SIGNATURE APPEARS HEREON.

BENCHMARK:
 FOUND BENT REBAR IN THE NORTHERN CORNER OF THE INTERSECTION AT CLINTON AVENUE, LOT 1.03 #872 CLINTON AVENUE, CAP ELEV. 53.02

Base Bid 'B' - Construction Plan

2021 Road Improvement Program
 Reconstruction of Pomona Avenue from
 from Oak Avenue to Dead End

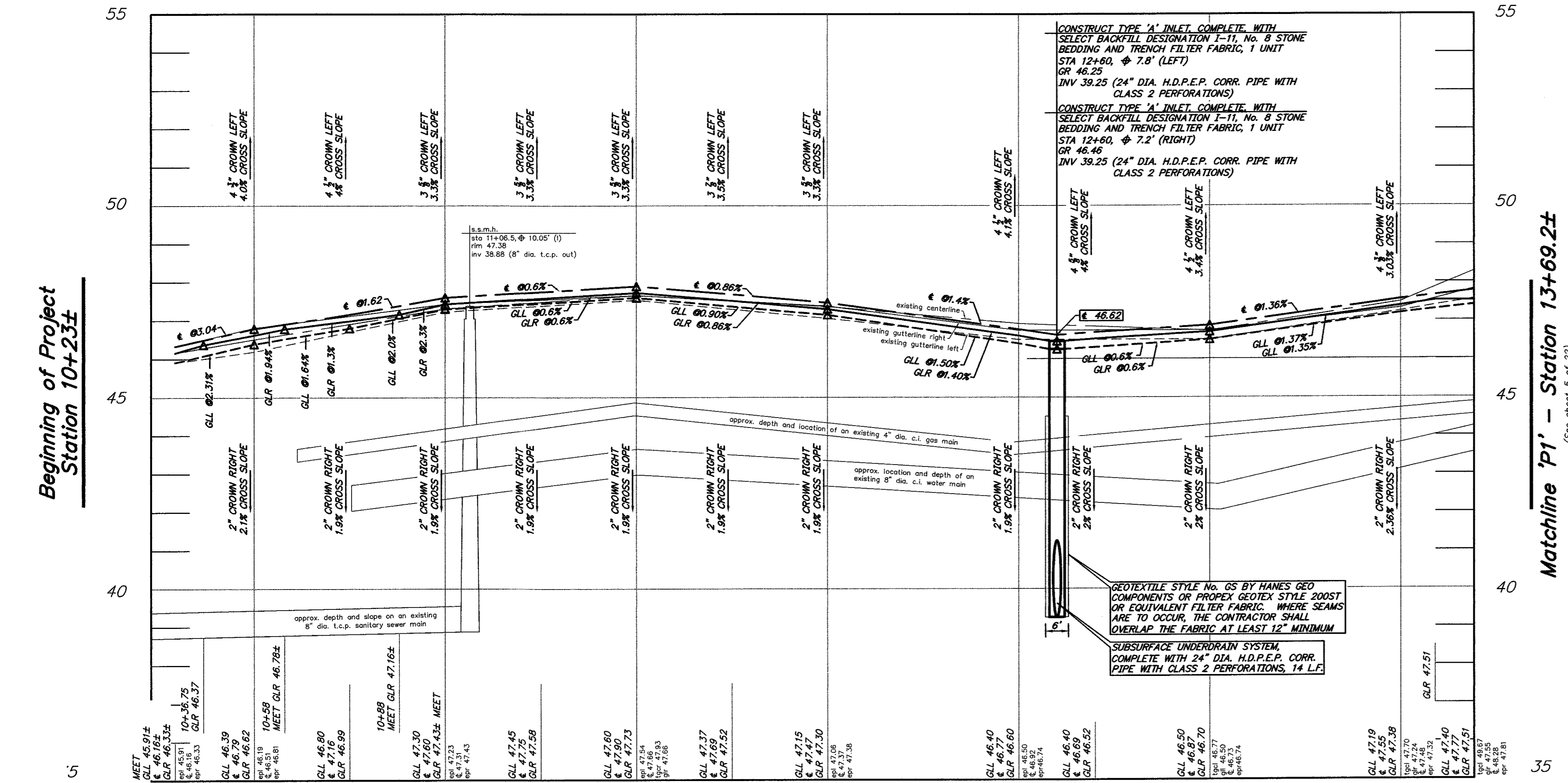
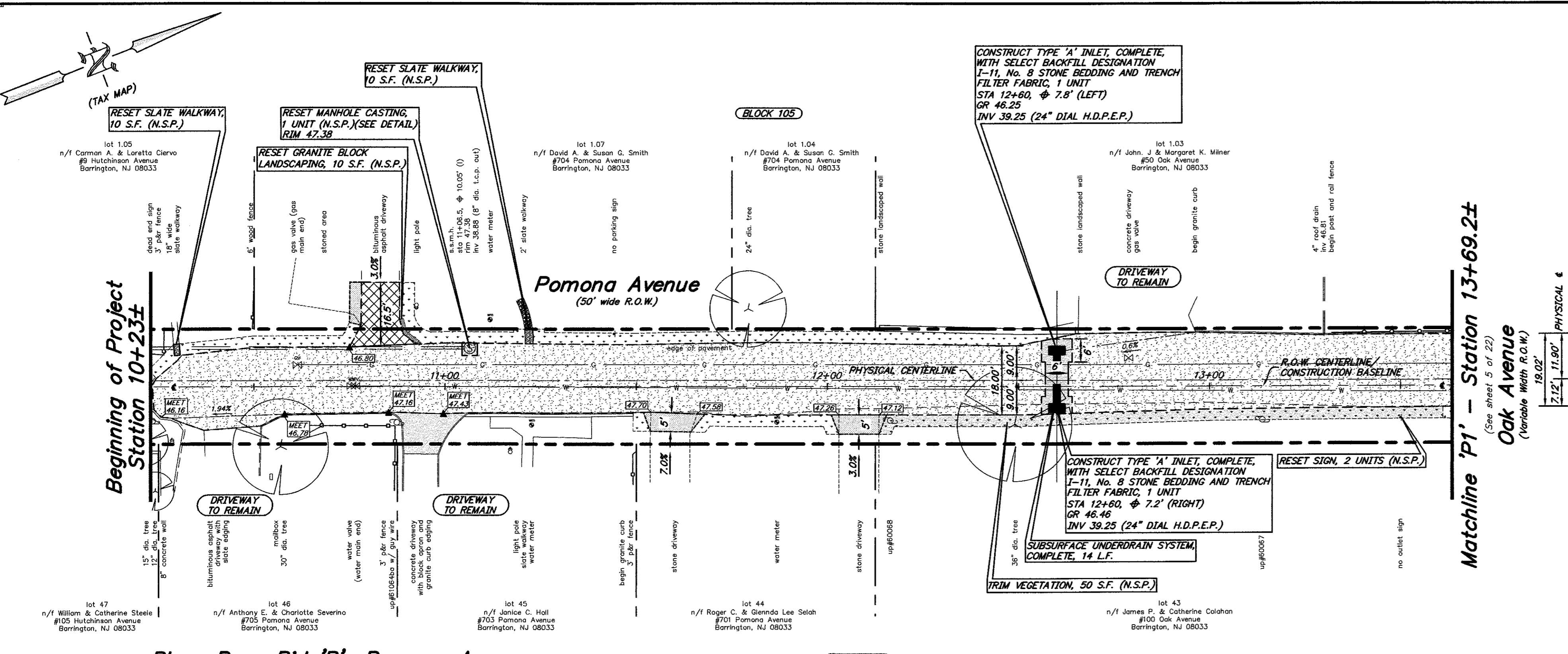
Borough of Barrington
 Camden County, New Jersey

DATE: 12/03/2021 DRAWN BY: S.H. CHKD. BY: SCALE: AS NOTED
 PROJECT No. 11-4628R0521 FIELD BOOK/PAGE: SHEET No. 8 OF 22

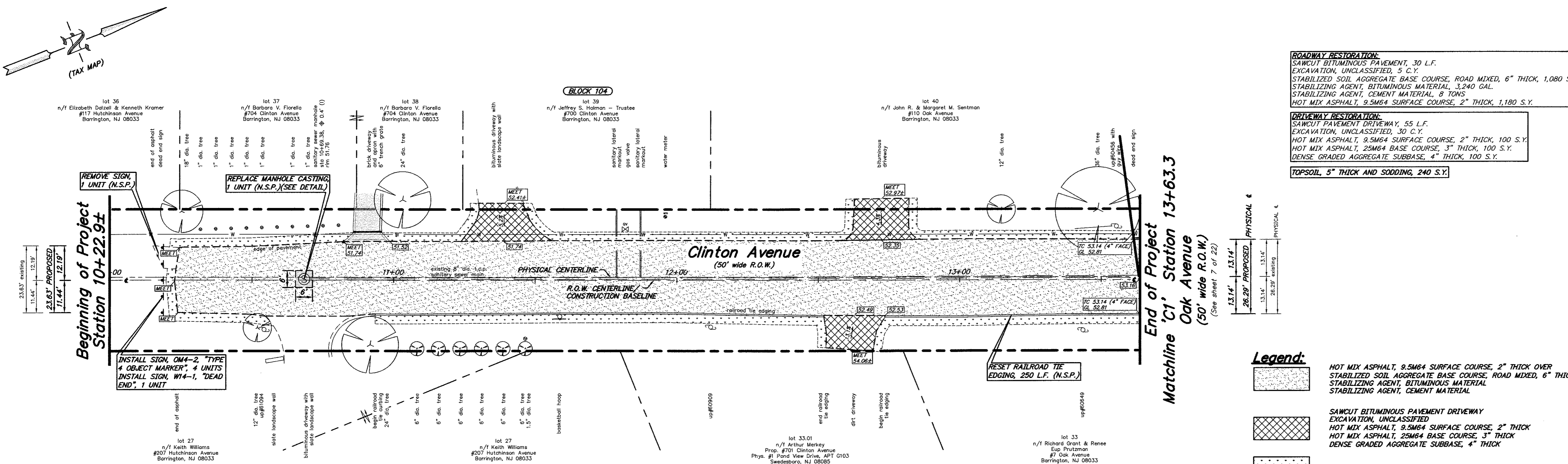
GREGORY BLASE FUSCO
 PROFESSIONAL ENGINEER
 NJPE No. 32853 P.A.P.E. No. 036608-E
 NJ PROFESSIONAL PLANNER No. 4076

KEI ASSOCIATES, P.A.

DATE: 3/29/22



CONSTRUCTION AND MATERIALS SHALL CONFORM TO THE DEPARTMENT'S STANDARD SPECIFICATIONS FOR ROAD AND BRIDGE CONSTRUCTION, 2019 EDITION, WHICH IS INCORPORATED HEREIN BY REFERENCE, AS AMENDED AND SUPPLEMENTED, AND THE DEPARTMENT'S SUPPLEMENTARY SPECIFICATIONS FOR STATE AID PROJECTS, 2019 EDITION, WHICH IS INCORPORATED HEREIN BY REFERENCE, AS AMENDED AND SUPPLEMENTED. STANDARD CONSTRUCTION DETAILS SHALL CONFORM TO THE LATEST REQUIREMENTS OF THE DEPARTMENT OF TRANSPORTATION "STANDARD ROADWAY CONSTRUCTION/ TRAFFIC CONTROL/ BRIDGE CONSTRUCTION DETAILS" BOOKLET DATED 2016 AND "ELECTRICAL BUREAU STANDARD DETAILS, 2007" AND ALL BASELINE DOCUMENT CHANGES MADE TO THESE CONSTRUCTION DETAILS, SHALL GOVERN, EXCEPT FOR THOSE DETAILS CONTAINED HEREIN.



Plan: Base Bid 'B': Oak Avenue
scale: 1" = 20'

ROADWAY RESTORATION:
SAWCUT BITUMINOUS PAVEMENT, 30 L.F.
EXCAVATION, UNCLASSIFIED, 5 C.Y.
STABILIZED SOIL AGGREGATE BASE COURSE, ROAD MIXED, 6" THICK, 1,080 S.Y.
STABILIZING AGENT, BITUMINOUS MATERIAL, 3,240 GAL.
STABILIZING AGENT, CEMENT MATERIAL, 8 TONS
HOT MIX ASPHALT, 9.5M64 SURFACE COURSE, 2" THICK, 1,180 S.Y.

DRIVEWAY RESTORATION:
SAWCUT BITUMINOUS DRIVEWAY, 55 L.F.
EXCAVATION, UNCLASSIFIED, 30 C.Y.
HOT MIX ASPHALT, 9.5M64 SURFACE COURSE, 2" THICK, 100 S.Y.
HOT MIX ASPHALT, 25M64 BASE COURSE, 3" THICK, 100 S.Y.
DENSE GRADED AGGREGATE SUBBASE, 4" THICK, 100 S.Y.

TOPSOIL, 5" THICK AND SODDING, 240 S.Y.

Legend:

- HOT MIX ASPHALT, 9.5M64 SURFACE COURSE, 2" THICK OVER STABILIZED SOIL AGGREGATE BASE COURSE, ROAD MIXED, 6" THICK STABILIZING AGENT, BITUMINOUS MATERIAL STABILIZING AGENT, CEMENT MATERIAL
- SAWCUT BITUMINOUS PAVEMENT DRIVEWAY EXCAVATION, UNCLASSIFIED
- HOT MIX ASPHALT, 9.5M64 SURFACE COURSE, 2" THICK HOT MIX ASPHALT, 25M64 BASE COURSE, 3" THICK DENSE GRADED AGGREGATE SUBBASE, 4" THICK
- TOPSOIL, 5" THICK AND SODDING

Base Bid 'B':
Reconstruction Of Oak Avenue from Pomona Avenue to Farragut Avenue & The Dead End sections of Pomona Avenue and Clinton Avenue
(FUNDED BY THE BOROUGH OF BARRINGTON)
Payment Items.

ITEM NUMBER	DESCRIPTION	UNIT MEASURED	QUANTITY SHEET No. 9
1	EXCAVATION, UNCLASSIFIED	C.Y.	35
2	SAWCUT BITUMINOUS PAVEMENT	L.F.	30
3	SAWCUT BITUMINOUS PAVEMENT DRIVEWAY	L.F.	55
4	TYPE 'A' INLET, WITH SELECT BACKFILL DESIGNATION I-11, No. 8 STONE BEDDING AND TRENCH FILTER FABRIC	UNIT	0
5	SUBSURFACE UNDERDRAIN SYSTEM, COMPLETE	L.F.	0
6	6"x8"x18" CONCRETE CURB, CLASS 'B' WITH SELECT BACKFILL, DESIGNATION I-11 AND DENSE GRADED AGGREGATE SUBBASE, 4" THICK	L.F.	0
7	CONCRETE ROCKER GUTTER, 8" THICK, CLASS 'V' WITH 6"x6"x1.4W1.4 WELDED WIRE MESH AND DENSE GRADED AGGREGATE SUBBASE, 6" THICK AND TRENCH FILTER FABRIC	L.F.	0
8	CONCRETE SIDEWALK AND CURB RAMP, 4" THICK, CLASS 'B' WITH SOIL AGGREGATE SUBBASE, 4" THICK	S.Y.	0
9	CONCRETE DRIVEWAY APRON/ SIDEWALK, 6" THICK, CLASS 'B' WITH DENSE GRADED AGGREGATE SUBBASE, 4" THICK	S.Y.	0
10	DETECTABLE WARNING SURFACE	S.F.	0
11	STABILIZED SOIL AGGREGATE BASE COURSE, ROAD MIXED, 6" THICK	S.Y.	1080
12	STABILIZING AGENT, BITUMINOUS MATERIAL	GAL.	3240
13	STABILIZING AGENT, CEMENT MATERIAL	TONS	8
14	DENSE GRADED AGGREGATE SUBBASE, 4" THICK (DRIVEWAY)	S.Y.	100
15	HOT MIX ASPHALT, 25M64 BASE COURSE, 3" THICK (DRIVEWAY)	S.Y.	100
16	HOT MIX ASPHALT, 9.5M64 SURFACE COURSE, 2" THICK	S.Y.	1180
17	TRAFFIC STRIPES, 6" WIDE	L.F.	0
18	TRAFFIC STRIPES, 12" WIDE	L.F.	0
19	SIGN	UNIT	5
20	TOPSOIL, 5" THICK AND SODDING	UNIT	240
21	ASPHALT PRICE ADJUSTMENT	L.S.	L.S.
22	FUEL PRICE ADJUSTMENT	L.S.	L.S.

No Specific Payment Items:

ITEM NUMBER	DESCRIPTION	UNIT MEASURED	QUANTITY SHEET No. 9
A	SOIL EROSION AND SEDIMENT CONTROL	N.S.P.	N.S.P.
B	REMOVE CONCRETE SIDEWALK	S.Y.	0
C	REMOVE CONCRETE DRIVEWAY APRON/ SIDEWALK	S.Y.	0
D	REMOVE CONCRETE CURB	S.Y.	0
E	REPLACE MANHOLE CASTING	UNIT	1
F	CLEANOUT PROTECTION BOX	UNIT	0
G	RESET BRICK DRIVEWAY	S.F.	0
H	RESET BRICK SIDEWALK	S.F.	0
I	RESET BRICK EDGING	L.F.	0
J	RESET COBBLESTONE CURB EDGING	L.F.	0
K	RESET GRANITE BLOCK LANDSCAPING	L.F.	0
L	RESET RAILROAD TIE EDGING	L.F.	250
M	RESET STONE LANDSCAPE AREA	S.F.	0
N	RESET SLATE WALKWAY	S.F.	0
O	RESET SIGN	UNIT	0
P	RESET GAS VALVE BOX	UNIT	0
Q	RESET WATER VALVE BOX	UNIT	0
R	RESET WATER METER PIT	UNIT	0
S	REMOVE SIGN	UNIT	1
T	TRIM VEGETATION	S.F.	0
U	JOINT SEALER	L.F.	53
V	CONCRETE SEALING	N.S.P.	N.S.P.
W	WATERING	N.S.P.	N.S.P.
X	MAINTENANCE AND PROTECTION OF VEHICULAR AND PEDESTRIAN TRAFFIC	N.S.P.	N.S.P.

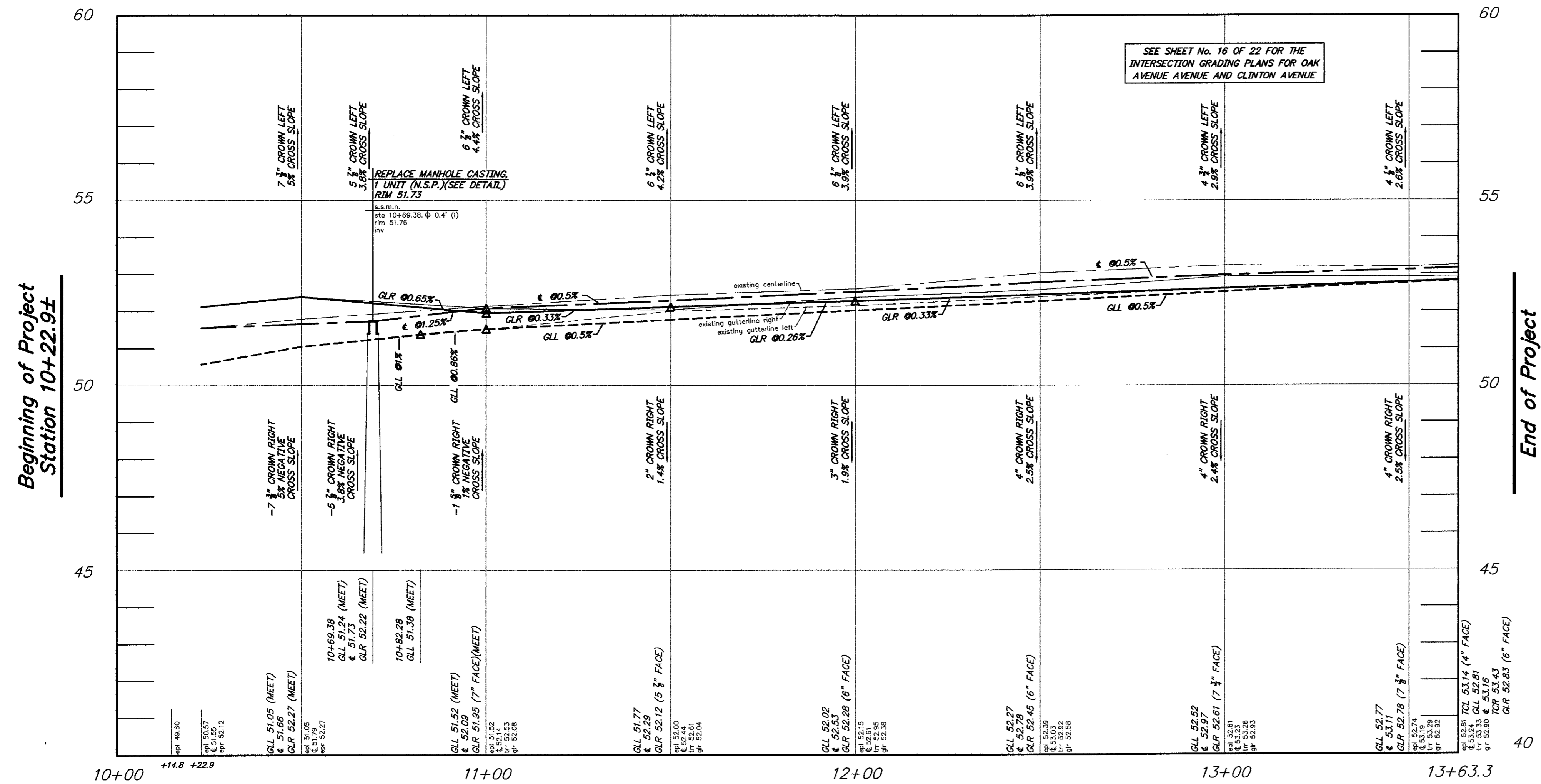
THE CONTRACTOR SHALL UTILIZE THE EXISTING ROADWAY AS A CONSTRUCTION ENTRANCE. THE ROADWAY SHALL BE CLEANED AS NEEDED OR AS DIRECTED BY THE CAMDEN COUNTY SOIL CONSERVATION DISTRICT AND THE BOROUGH ENGINEER, TO ELIMINATE TRAFFIC HAZARDS, DUST, ETC. (SEE SOIL CONSERVATION NOTES), LUMP SUM (N.S.P.).

CRUSHED OR RECYCLED CONCRETE OR CRUSHED OR RECYCLED ASPHALT WILL NOT BE ACCEPTED AS A SUBSTITUTE TO DENSE GRADED AGGREGATE FOR THIS PROJECT.

(N.S.P.) INDICATES NO SPECIFIC PAYMENT WILL BE MADE FOR THE ITEM. THE COST SHALL BE INCLUDED IN VARIOUS ITEMS IN THE PROPOSAL.

THE CONTRACTOR SHALL NOT ENTER ONTO ANY PRIVATE PROPERTIES WITHOUT RECEIVING A "CONSENT TO ENTER AGREEMENT" FROM THE PROPERTY OWNER.

SHOULD POLICE TRAFFIC DIRECTORS BE REQUIRED, THEIR SERVICES SHALL BE PAID FOR BY THE BOROUGH AT NO COST TO THE CONTRACTOR. HOWEVER, THE CONTRACTOR MUST STILL PROVIDE AT HIS COST, MAINTENANCE AND PROTECTION OF TRAFFIC IN ACCORDANCE WITH THE SPECIFICATIONS. 24-HOUR ROAD CLOSINGS WILL NOT BE PERMITTED, UNLESS APPROVED BY THE CHIEF OF POLICE.



Profile: Clinton Avenue
scale: horizontal: 1 inch = 20 feet
vertical: 1 inch = 2 feet

CONSTRUCTION AND MATERIALS SHALL CONFORM TO THE DEPARTMENT'S STANDARD SPECIFICATIONS FOR ROAD AND BRIDGE CONSTRUCTION, 2019 EDITION, WHICH IS INCORPORATED HEREIN BY REFERENCE, AS AMENDED AND SUPPLEMENTED, AND THE DEPARTMENT'S SUPPLEMENTARY SPECIFICATIONS FOR STATE AID PROJECTS, 2019 EDITION, WHICH IS INCORPORATED HEREIN BY REFERENCE, AS AMENDED AND SUPPLEMENTED. STANDARD CONSTRUCTION DETAILS SHALL CONFORM TO THE LATEST REQUIREMENTS OF THE DEPARTMENT OF TRANSPORTATION "STANDARD ROADWAY CONSTRUCTION/ TRAFFIC CONTROL/ BRIDGE CONSTRUCTION DETAILS" BOOKLET DATED 2016 AND "ELECTRICAL BUREAU STANDARD DETAILS, 2007" AND ALL BASELINE DOCUMENT CHANGES MADE TO THESE CONSTRUCTION DETAILS, SHALL GOVERN, EXCEPT FOR THOSE DETAILS CONTAINED HEREIN.

BENCHMARK: FOUND BENT REBAR IN THE NORTHERN CORNER OF THE INTERSECTION AT CLINTON AVENUE, LOT 1.03 402 CLINTON AVENUE, NO CAP. ELEV. 53.02

REPRODUCTION, ALTERATION AND AMENDMENT OF THIS PLAN SHALL BE PERFORMED ONLY BY KEI ASSOCIATES, P.A. AND SHALL BE PERFORMED UNDER THE ABSOLUTE DIRECTION OF THE LICENSED PROFESSIONAL WHOSE NAME AND SIGNATURE APPEARS HEREON.

REV.	DATE	DESCRIPTION	DRWN.	CHKD.
Base Bid 'B' - Construction Plan				
2021 Road Improvement Program Reconstruction to Clinton Avenue from the Oak Avenue to Dead End				
Borough of Barrington Camden County, New Jersey				
DATE: 12/03/2021 DRAWN BY: S.H. CHKD. BY: SCALE: AS NOTED				
PROJECT No. 11-4628R0521 FIELD BOOK/PAGE: SHEET No. 9 OF 22				
GREGORY BLASE FUSCO PROFESSIONAL ENGINEER				
NJPE No. 32853 PA.PE No. 036608-E NJ PROFESSIONAL PLANNER No. 4076				
PROFESSIONAL ENGINEERS, LAND SURVEYORS AND PLANNERS 80 S. WHITE HORSE PIKE, BERLIN, NEW JERSEY 08009 (856) 767-6111 FAX: (856) 753-1091, www.keiassociates.com				
				DATE: 3/29/22