

**BOROUGH OF BARRINGTON
DEPARTMENT OF PUBLIC WORKS
RECYCLING AND TRASH COLLECTION SCHEDULE
AND REGULATIONS 2023**

MONDAY Brush, Limbs and Stumps (all year). Vegetative Waste (all year)

THURSDAY Single Stream Recycling collected by Seaside Waste Services.
Stumps and Concrete, call the DPW office prior to Thursday's pick
up day and leave your address for Borough collection, 547-2486 ext. 105.

FRIDAY Trash collected by Seaside Waste Services.
Appliances and scrap metal, call the DPW office prior to Fridays
pick up day and leave your address for Borough collection 547-2486 ext.105

APPLIANCES & SCRAP METAL: Call the DPW office at 547-2486 ext. 105 prior to Friday's pickup day. Metal list items are the following: washers, dryers, stoves, hot water heaters, refrigerators, freezers, dishwashers, window air conditioners. Scrap metal is any and all metal objects with non-metal elements removed. These items should be placed on park strip separate from trash. Refrigerators are to have doors removed. Place Appliances and Scrap Metal curbside the night before collection but no earlier than 1:00 p.m. the day preceding collection to ensure that your Appliances and Scrap Metal will be picked up. Do not place your Appliances and Scrap Metal in the street as this is a dangerous practice that may cause a liability problem. Appliances and Scrap Metal placed on the park strip will not harm the grass.

BRUSH, LIMBS, STUMPS: Includes tree limbs and trimmings, brush with roots removed and stumps not anymore than twelve (12) inches in diameter with all dirt washed off. Brush, limbs and stumps should be no longer than 4 ft. If stumps are more than 12" in diameter call the DPW office for pick up prior to Thursday at 547-2486 ext. 105. Any tree removal work done by a Homeowner and/or Contractor is the responsibility of Homeowner and/or Contractor to dispose of debris. Place brush, limbs, stumps, curbside the night before collection but no earlier than 1:00 p.m. the day preceding collection to ensure that your brush limbs and stumps will be picked up. Do not place brush limbs and stumps in the street as this is a

dangerous practice that may cause a liability problem. Brush limbs and stumps placed on the park strip will not harm the grass.

CONCRETE/BLOCK/BRICK: Small piles of debris not to exceed 500 lbs. in aggregate and pieces may not exceed 50 lbs. per piece. DPW Office must be notified prior to Thursdays pick up at 547-2486 ext. 105. If Homeowner and/or Contractor is replacing driveway, apron, curb, sidewalk, or any other type of renovations, arrangements must be made for private disposal of all resulting debris. A concrete permit must also be obtained from the Code Enforcement Office.

CONSTRUCTION DEBRIS: If you are doing any remodeling or building, you are responsible for removal of all debris whether you use a Contractor or not. This means you must rent a dumpster. If the job is very small the Borough will pick up five containers of debris per week not exceeding 50 pounds per container and wood must be cut into 4' pieces with all the screws and/or nails removed.

SINGLE STREAM RECYCLING

Includes milk, juice cartons, etc., glass bottles and jars, #1 & #2 plastic bottles, jar and jugs, aluminum, metal food and beverage containers, loose metal jar lids and steel bottle caps, paperback books, junk mail envelopes, post it notes, greeting cards, etc., newspaper, magazines, circulars, brochures, inserts, etc., (no bags, do not tie and bundle), telephone books, file folders, office paper, corrugated cardboard and paper bags, paper board boxes (cereal, pasta, tissue, etc.), paper towel roll inserts. **No plastic bags, no plastic other than #1 and #2 (identified above), no plastic (or paper) to-go containers, cups, straws, or utensils, no plastic film or bubble wrap, no pizza boxes, no styrofoam of any kind, no frozen food, ice cream or frozen juice containers, no organic material or food waste, no hoses or hangers.**

The above allowable Single Stream items can be placed all together in one yellow recycling container. Yellow 32 gal. recycling containers are available at the Borough Hall. Place items curbside the night before collection but no earlier than 1:00 p.m. the day preceding collection to ensure that you're recycling will be picked up. Do not place your recycling in the street as this is a dangerous practice that may cause a liability problem. Recycling placed on the parkstrip will not harm the grass. The above Single Stream recycling is collected by Seaside Waste Services. If your recycling was not collected or there is a problem, please call Seaside Waste Services at 609-561-0441 or call the Department of Public Works at 547-2486 ext.105

See attached flyer for more specific information on Single Stream Recycling rules and regulations.

SPRING LEAF PICK UP:

Week of 4/3, the pickup will consist of the whole town. Please put leaves to park strip and not in street. Leaf signs will be posted the week prior to pick up.

FALL LEAF PICK UP:

Will begin the week of 10/2 and ending the week of 12/25 weather permitting. There are 3 districts which will have 4 pick ups. Leaves are to be put to the park strip. Do not put leaves in street. Leaf machine will make one pass thru on your scheduled pick up week. The week of Thanksgiving there will be no pick up due to the short work week. Leaf signs will be posted the week prior to pick up.

CONTAINERIZED LEAF PICK UP:

Will be picked up the beginning of each week on Mondays. Place containerized leaves curbside the night before collection but no earlier than 1:00 p.m. the day preceding collection to ensure that your containerized leaves will be picked up. If your containerized leaves are not picked up by Monday, leave them curbside to be collected the following day. Do not place your containerized leaves in the street as this is a dangerous practice that may cause a liability problem. Containerized leaves placed on the park strip will not harm the grass.

FENCING AND RAILROAD TIES:

All wooden fencing and railroad ties should be cut to 4' lengths and limited to no more than 10 pieces per week. They can be put out for trash on Friday. If Contractor is doing work the Contractor is responsible for disposal of all Debris. Place fencing and railroad ties curbside the night before collection but no earlier than 1:00 p.m. the day preceding collection to ensure that your fencing and railroad ties will be picked up. Do not place your fencing and railroad ties in the street as this is a dangerous practice that may cause a liability problem. Fencing and railroad ties placed on park strip will not harm the grass.

TIRES:

May be put out for regular trash pick up without the rim; limit 2 per household per week. Tires w/rim will not be taken. Place tires curbside the night before collection but no earlier than 1:00 p.m. the day preceding collection to ensure that your tires will be picked up.

Do not place your tires in the street as this is a dangerous practice that may cause a liability problem. Tires placed on the park strip will not harm the grass.

VEGETATIVE WASTE:

Includes grass clippings, sticker balls, acorns, pinecones and viney type materials such as ivy, honey-suckle, poison ivy, laurel and plant clippings. Vegetative waste is to be placed in the green 20 gal. waste containers provided to resident or an open container of not more than 30 gals., weighing no more than 50 lbs. **Remember, plastic bags are prohibited.** You can buy additional green containers at the Borough Hall. Please, no dirt or sod. Place vegetative waste curbside the night before collection but no earlier than 1:00 p.m. the day preceding collection to ensure that your vegetative waste will be picked up. Do not place your vegetative waste in the street as this is a dangerous practice that may cause a liability problem. Vegetative waste placed on the park strip will not harm the grass.

WASTE OIL:

Waste oil may be brought to the Public Works Garage Monday through Friday by appointment, 7:00 a.m. to 2:30 p.m. Please do not drop off after hours and leave at gate. Anyone caught dropping off oil and leaving at gate after hours can be cited for illegal dumping.

TRASH:

Trash collected by Seaside Waste Services. Place trash curbside the night before collection but no earlier than 1:00 p.m. the day preceding collection to ensure that your trash will be picked up. Do not place your trash cans in the street as this is a dangerous practice that may cause a liability problem. Trash cans placed on the park strip will not harm the grass. If your trash was not collected or there is a problem please call Seaside Waste Services at 609-561-0441 or the Department of Public Works at 547-2486 ext. 105.

HAZARDOUS WASTE:

Will not be picked up by the DPW. Residents should call the Camden County Department of Environmental Affairs at 858-5241 for information on the legal disposal of these materials. The CCDEA does provide a household hazardous waste collection schedule for disposal of these types of items.

Examples of hazardous waste are the following: car batteries, oil based paints, propane tanks, fuel, etc.

ELECTRONICS RECYCLING: See attached revised list



Thanks For Being Green, LLC
& *Magnum Computer Recycling*
205 Park Place • Audubon, New Jersey 08106

ACCEPTED ITEMS

ac adapters	metal - baled or loose
aluminum, brass, light iron and copper	microwave ovens
audio and video equipment (no wood)	motherboards, b, c, tweener and finger boards
ballasts (non-PCB 's)	motors
car batteries	mp3 players / ipods
cash registers	PC fans and power supplies
cell phones and telephones	PC scrap and stereos (no wood)
computer memory	PC's - desktop, laptops, tablets, towers
computer periphery and parts	police scanners and pagers
e-readers	portable radios
game consoles	printers, copiers, scanners, modems, fax machines
gold clip ends	scales
handheld / table mounted scanners	televisions
hard drives	toner and ink cartridges
household appliances not containing a compressor	uninterrupted power supply
keyboards, mice and pc speakers	vcr, dvd, blueray, laser disk and cd players
laptop and cell phone batteries	wire - all types
LCD or CRT computer monitors	yokes
lead acid batteries	



Thanks For Being Green, LLC
& *Magnum Computer Recycling*
205 Park Place • Audubon, New Jersey 08106

February 9, 2021

Hello Magnum Customer,

Due to recent fires at several recyclers and increased handling and recycling costs, we are implementing a new rechargeable battery ban. **Magnum will no longer accept loose, rechargeable batteries.**

Batteries in any accepted item we currently handle (laptops, cell phones, ...) are exempt from this new policy.

Loose batteries are not only a fire hazard but as markets have changed the costs to package, ship, and recycle these items to meet DOT, EPA, R2/13, and NJDEP guidelines for documented certified recycling have skyrocketed.

If batteries are found in your e-waste loads, we can return them on your next pickup or we can recycle them for a fee of \$3.00 per lb.

If you are capable of safely separating loose lithium ion laptop and lithium ion cell phone batteries, with guidance from Magnum, we will recycle them at no charge.

This new policy does not apply to lead acid batteries.

Sincerely,

John D. Martorano, Jr.

SINGLE STREAM RECYCLING



Milk, juice cartons, etc.



Glass bottles & jars



#1 & #2 plastic bottles, jars, and jugs



Aluminum, metal food, & beverage containers



Loose metal jar lids & steel bottle caps



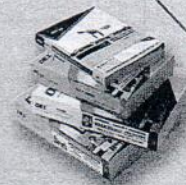
Paperback books



Junk mail, envelopes, post it notes, greeting cards, etc.



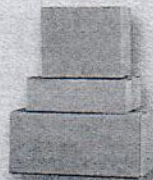
Newspaper, magazines, circulars, brochures, inserts, etc. (no bags, do not tie & bundle)



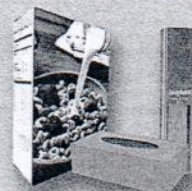
Telephone books



File folders, office paper



Corrugated cardboard & paper bags



Paperboard boxes (cereal, pasta, tissue, etc.)



Paper towel roll inserts

For more information visit
CamdenCounty.com/Recycling

**AIM FOR
MAXIMIZED
RECYCLING**



NO



- NO** Plastic bags
- NO** Plastics other than #1 and #2 (identified above)
- NO** Plastic (or paper) to-go containers, cups, straws, or utensils
- NO** Plastic film, wrap, or bubble wrap
- NO** Pizza boxes
- NO** Styrofoam of ANY kind
- NO** Frozen food, ice cream, or frozen juice containers
- NO** Organic material or food waste
- NO** Hoses or hangers

NO NEED TO REMOVE:

Paper clips, stamps, address labels, staples, metal fasteners, cellophane address windows, rubber bands, spiral bindings, plastic tabs.

✓ **Empty & Rinse All Containers.**

✓ **Please follow these guidelines carefully.**

camden **county**

Making It Better, Together.

This document was printed on recycled paper



TRAYECTORIA DE RECICLAJE



Envases de cartón de leche, jugos, etc.



Botellas y envases de cristal



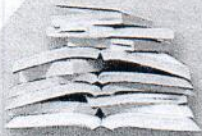
Envases de plástico #1 y #2



Envase de aluminio y metal de alimentos y bebidas



Tapas de metal sueltas y tapas de botellas de acero



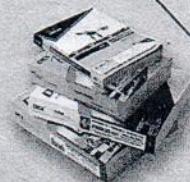
Libros encuadernados



Correo de propaganda, sobres, hojas de notas adhesivas, tarjetas de felicitación, etc.



Periódico, revistas, circulares, folletos, hojas sueltas, etc. (No amarre ni los empaquete en bolsas)



Guías telefónicas



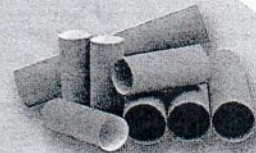
Carpetas, papel de oficina



Cartón corrugado y bolsas de papel



Cajas de cartón (de cereales, pasta, pañuelos de papel, etc.)



Rollo o cilindro de toallas de papel

Para más información visite CamdenCounty.com/Recycling

ASPIRAR A UN RECICLAJE MÁXIMO



NO



- NO** Bolsas de plástico
- NO** Plásticos distintos del #1 ó #2 (identificados arriba)
- NO** Contenedores de plástico o papel de uso para llevar, vasos, sorbetes y utensilios
- NO** Cintas plásticas, plástico de envolver, plástico de envolver de burbujas

- NO** Cajas de pizza
- NO** Espuma de poliestireno o de cualquier clase
- NO** Contenedores de jugos congelados, helados, y comida congelada
- NO** Material orgánico o desperdicios de comida
- NO** Mangueras y ganchos

NO ES NECESARIO REMOVER:

Clip de sujetar, sellos, etiquetas de dirección, grapas, sujetadores de metal, teléfono celular, sobres de papel transparente, gomas elásticas, fijación espiral, etiquetas de plástico, etc.

- ✓ Vacíe y enjuague todos los contenedores.
- ✓ Por favor, siga estas directrices cuidadosamente.

camden county

Making It Better, Together.



THE RECYCLING BIN'S DIRTY DOZEN



1 NO Plastic Bags

Plastic bags are the WORST contaminant in the recycling bin. When placed in a curbside bin, they get wet and dirty and cannot be recycled. Plastic bags with a #2 or #4 can be recycled at the CHaRM (Center for Hard-to-Recycle Materials) if they are clean, dry and empty. They may also be recycled at participating grocery stores; find a list of participating stores.



2 NO Materials in Plastic Bags

Workers have to slow the conveyor belts to rip open bags that contain recyclables and then add the bag to the heap of bags bound for the landfill. These inefficiencies waste time and money.



3 NO Shredded Paper

Shredded paper is too small to sort. The pieces fall through the cracks of the sorting machines, stick to the belts and end up all over the floor. Please avoid shredding when possible because it destroys the potential for recycling. Compost shredded materials in your curbside compost bin (if you have one) or recycle at your local Recycling Drop-off Center.



4 NO Scrap Metal

Scrap metal items of any size should not go into your curbside bin. These items cause excessive damage to the recycling equipment.



5 NO Hazardous Waste

Hazardous waste such as paint, automotive fluids, car batteries and pesticides must be taken to your local Hazardous Waste Facility, not to the Recycling Center.



6 NO Diapers or Bio-Hazardous Waste

Syringes and needles, diapers and other sanitary products are not recyclable.



THE RECYCLING BIN'S DIRTY DOZEN



7 NO Nonrecyclable Plastics

While we have added new plastic items, many plastics are still not recyclable. Plastic lids, foam (Styrofoam®) and any other plastics not listed in our recycling guidelines are not recyclable because stable markets do not exist for these materials.



8 NO Flattened Containers

The single-stream sorting equipment separates "flats" (paper) from "rounds" (containers). When containers are flattened, the equipment mistakenly sends them to the paper side of the facility, significantly contaminating the paper we're sending to market.



9 NO Caps/Lids on Glass Bottles or Jars

Metal lids can be removed and recycled loose in the bin. Plastic lids and caps from glass bottles and jars should be thrown away.



10 NO Liquids

When we compact bottles for shipping, liquids drip, splatter and explode all over the floor, creating a sticky, smelly mess on the sorting floor. Please completely empty and quickly rinse out all containers before recycling.



11 NO Ceramics or Nonrecyclable Glass

Ceramic, china, dishes, mirrors, light bulbs, Pyrex®, porcelain and window glass should not go into the bin! Their different melting points and chemical compositions will ruin new glass bottles.



12 NO Frozen Food Containers

Paperboard boxes that were designed for freezer foods, such as frozen pizza and entrées, have a plastic polymer sprayed on them to protect against freezer burn. That same coating prevents the box from breaking up in the recycling process. These materials are not recyclable OR compostable.



Keep New Jersey safe with responsible battery disposal.





DO NOT THROW RECHARGEABLE BATTERIES IN THE TRASH OR RECYCLING BIN.

Improper battery disposal has caused an increased number of fires in New Jersey recycling centers, waste facilities and garbage trucks, resulting in millions of dollars in damage and lives put in danger.

Be battery safety smart!

Used household batteries can and should be recycled.

Manage your household batteries safely & responsibly with these easy battery disposal guidelines.

Rechargeable (can be recharged multiple times)	Single-Use: Lithium, Button Cell (cannot be recharged)	Single-Use: Alkaline (nonhazardous waste, cannot be recharged)
Name on battery: <ul style="list-style-type: none"> • Nickel Cadmium (Ni-Cd) • Nickel Metal Hydride (Ni-MH) • Lithium Ion (Li-Ion) • Small Sealed Lead Acid (SSLA/Pb) 	Name on battery: <ul style="list-style-type: none"> • Lithium 	Name on battery: <ul style="list-style-type: none"> • Alkaline • Zinc-carbon • Zinc-chloride (Heavy Duty)
		
Proper disposal: <ul style="list-style-type: none"> ✓ Recycle with Call2Recycle® (call2recycle.org/locator, only batteries weighing less than 11 lbs each). ✓ Take to your local household hazardous waste center. 	Proper disposal: <ul style="list-style-type: none"> ✓ Take to your local household hazardous waste center. 	Proper disposal: <ul style="list-style-type: none"> ✓ Purchase a battery recycling kit at call2recycle.org/store or visit Earth911.org for recycling locations near you. ✓ Check the Recycle Coach app or call your local household hazardous waste center for information.
		

! Bag each battery or tape each battery's terminals prior to storing or bringing to a collection site.

Not sure what type of battery you have?

When in doubt, bring your battery to a household hazardous waste program.

Have questions?

Visit call2recycle.org, njhazwaste.com, anjr.com, or use the **Recycle Coach** app to learn more about safely managing your household batteries.

Battery Identification Guide for Common Household Batteries

Prevent battery fires, keep people and property safe. It's also good for the planet as trashed batteries can leak potentially hazardous materials into the waste stream and increase the need to mine for virgin materials. Be battery safety smart by individually bagging or taping all used batteries before dropping off at designated collection locations.

Ni-MH



Type: Rechargeable
Name on battery: Ni-MH
Seal color: Orange



Nickel-Metal Hydride

Performs well in high drain devices and can be recharged up to 1,000 times.

Products that may use or contain Nickel Cadmium batteries:

Power Tools

Two-Way Radios

Digital Cameras

Cordless Phones



Proper disposal:

1. Individually bag or tape the battery terminals
2. Visit call2recycle.org to find a drop-off location or bring to your local County Household Hazardous Waste program (njhazwaste.com)

Ni-Cd



Type: Rechargeable
Name on battery: Ni-Cd
Seal color: Green



Nickel Cadmium

Can be recharged up to 1,000 times and contains Cadmium, which can be toxic to the environment and should be recycled.

Products that may use or contain Nickel Cadmium batteries:

Power Tools

Two-Way Radios

Digital Cameras

Cordless Phones



Proper disposal:

1. Individually bag or tape the battery terminals
2. Visit call2recycle.org to find a drop-off location or bring to your local County Household Hazardous Waste program (njhazwaste.com)

SSLA/Pb



Type: Rechargeable
Name on battery: SSLA/Pb
Seal color: Gray



Small Sealed Lead Acid

Simple to manufacture and have one of the lowest discharge rates of any rechargeable battery

Products that may use or contain Small Sealed Lead Acid batteries:

Emergency
Devices

Ride-On
Toys

Security
Systems

Mobility
Scooters

UPS Back-Ups



Proper disposal:

1. Individually bag or tape the battery terminals
2. Visit call2recycle.org to find a drop-off location or bring to your local County Household Hazardous Waste program (njhazwaste.com)

Battery Identification Guide for Common Household Batteries

Li-Ion



Type: Rechargeable
Name on battery: Li-Ion
Seal color: Blue



Lithium Ion

Has excellent performance in high drain devices, though it can be considered expensive.

Products that may use or contain Lithium Ion batteries:



Proper disposal:

1. Individually bag or tape the battery terminals
2. Visit call2recycle.org to find a drop-off location or bring to your local County Household Hazardous Waste program (njhazwaste.com)

Primary



Type: Non-Rechargeable
Name on battery: alkaline, lithium, zinc-air, zinc-carbon, zinc-chloride, CR/SR/LR (button batteries)

Primary/Single-Use

Primary/Single-Use batteries cannot be recharged and must be disposed of once they wear out. Alkaline, lithium, silver oxide, zinc-air, zinc-carbon, and zinc-chloride are all types of primary batteries.

Products that may use or contain primary/single-use batteries:



Proper disposal: Lithium type or button cell primary/single use

1. Individually bag or tape the battery terminals
2. Visit call2recycle.org to find a drop-off location or bring to your local County Household Hazardous Waste program (njhazwaste.com)

Proper disposal: Alkaline, Zinc-Chloride, Zinc-Carbon, and other type primary/ single-use (nonhazardous waste)

1. Individually bag or tape the battery terminals
2. Purchase your battery recycling kit at call2recycle.org/store or visit Earth911.org for recycling locations near you.
3. Use the **Recycle Coach** app or contact your local County Hazardous Waste Program for more information.

Have questions?

Visit call2recycle.org, njhazwaste.com, anjr.com, or use the **Recycle Coach** app to learn more about how to safely manage your household batteries.

Not sure what type of battery you have?

When in doubt, bring your battery to a household hazardous waste program.

LEAF SEASON 2023

Beginning with the week of October 2nd, 2023, the Borough will be divided into three (3) districts for the purpose of leaf collection. Each district will receive one collection per week. The districts, and the scheduled collection dates are listed below.

STREETS DIVIDED INTO DISTRICTS

Week of: 10-02, 10-23 11-13, 12-11 <u>DISTRICT #1</u>	10-09 10-30, 11-27, 12-18 <u>DISTRICT #2</u>	10-16, 11-06 12-04, 12-25 <u>DISTRICT #3</u>
Adams Avenue	Albany Avenue	Avon Road
Ashley Court	Albertson Avenue	Baptiste Avenue
Alyse Court	Ashland Avenue	Bell Avenue
Barr Drive	Atlantic Avenue	Chesterfield Road
Beaver Drive	Austin Avenue	Clinton Road
Cedar Avenue	Barrington Avenue	Copley Road
Clark Drive	Clements Bridge Road (WHP to Glouc. PK)	Copley Place N & S
Clements Bridge Road (Gloucester Pike to Runn. Brdr.)	Charles Avenue	Devon Road
Center Street	Dubois Avenue	Farragut Avenue (1-Home)
Cleveland Avenue	Erie Avenue	Highland Avenue
Commerce Drive	Haines Avenue	Hobart Drive
Courtney Drive	Kingston Avenue	Hutchinson Avenue
Davis Road	Lawrence Avenue	Kent Avenue
Edwards Avenue	Moore Avenue	Letitia Lane
Enders Drive	Newton Avenue	Mercer Drive
Gloucester Pike (all)	Page Avenue	Nassau Drive N & S
Hearne Drive	Reading Avenue	Oak Avenue
Lauren Lane	Thomas Avenue	Oakwood Road
Lenton Avenue	Trenton Avenue	Peltoma Road
Little Lane	White Horse Pike	Pomona Road
Lott Avenue	Woodland Avenue	Princeton Road
Madison Avenue	2 nd Avenue	Tavistock Blvd.
Richards Avenue	3 rd Avenue	Warwick Road
Russell Avenue	4 th Avenue	Wayne Road
Schiena Lane	5 th Avenue	Whitman Drive
Shreve Avenue	W. 1 st Avenue	
S. Moore Avenue	W. 2 nd Avenue	
Timber Drive	W. 3 rd Avenue	
Trinity Place	W. 4 th Avenue	
Williams Avenue E & W	W. 5 th Avenue	
Willmont Avenue		