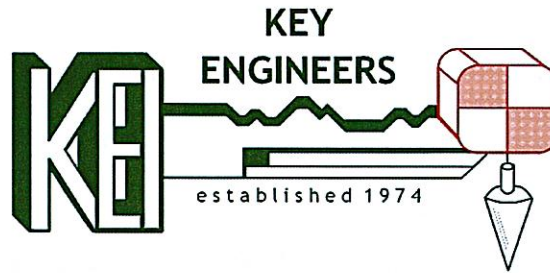


ENGINEERING & PLANNING

Municipal
Consulting
Construction
Residential
Commercial
Industrial
Construction Management



SURVEYING

Residential
Commercial
Industrial
Governmental
Construction

~Celebrating Over 52 Years of Excellence~

April 29, 2026
*Via Hand Delivery

TO: ALL RESIDENTS ALONG BELL AVENUE AND BAPTISTE

RE: NOTICE OF CONSTRUCTION
IMPROVEMENTS TO BELL AVENUE
From the White Horse Pike to Baptiste Avenue
Borough of Barrington, Camden County, New Jersey
(KEI #11-486BR0324)

Dear Residents:

The Borough of Barrington awarded a contract to Landberg Construction LLC of Dorothy, New Jersey for the completion of the above referenced project. The contractor anticipates commencing with roadway improvements on Wednesday, May 6, 2026 and completing the line striping on Friday, May 8, 2026, weather permitting.

The construction consists of roadway pavement milling, overlay, line striping and associated improvements (see attached reduced construction plans for the project limits).

During construction two (2) Police Officers will be present to assist with traffic control.

Also, during the period of construction, residents and motorists may experience some inconveniences. However, the contractor will make every possible effort to minimize said inconveniences. Emergency vehicles such as fire apparatus, ambulance and police vehicles will have access to the roadway at all times. Portions of the roadway will be closed with one (1) lane open. The entire roadway will be open at the end of each workday.

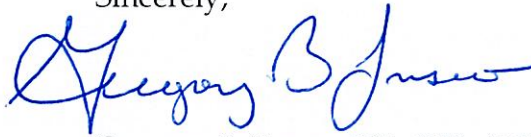
In addition, we are requesting that you place your trash/recyclables out at the curb the night before the day of collection, so they can be picked up first thing in the morning.

If you are aware of any hazardous site conditions caused by construction or have any questions or comments, please contact Mr. Greg Evans, Project Manager, of this office at 609-922-2276 or 856-767-6111 (Ext. 28) or the contractor, Mike Landberg, at 609-829-2131, immediately, so the hazardous condition(s) can be corrected.

This project, which is funded by the Borough, will be inspected by Key Engineers, Inc.

Your patience and cooperation during the time of construction is requested and sincerely appreciated. We are confident that the completed project will more than compensate you for the inconveniences you may experience during the period of construction.

Sincerely,



Gregory B. Fusco, P.E., P.P., C.P.W.M.
Certified Municipal Engineer
Barrington Borough Engineer

GE:ke

cc: Mayor Kyle Hanson (email)
Members of Council (email)
Police Chief Mike Minardi (email)
Captain David Pawling (email)
Fire Chief Joe Hales (email)
Ms. Kate Bowen, Barrington Ambulance Captain (email)
Mr. Michael Ciocco, C.P.W.M., Superintendent of Public Works (email)
Ms. Denise Moules, R.M.C., Borough Clerk/C.F.O. (email)
Mr. Mike Landberg, Vice President, Landberg Construction, LLC (email)
Mr. Kyle Sooy, Project Manager, Landberg Construction, LLC (email)

Attachment

Projects\11\486\Docs\Resident Letter - Bell & Baptiste

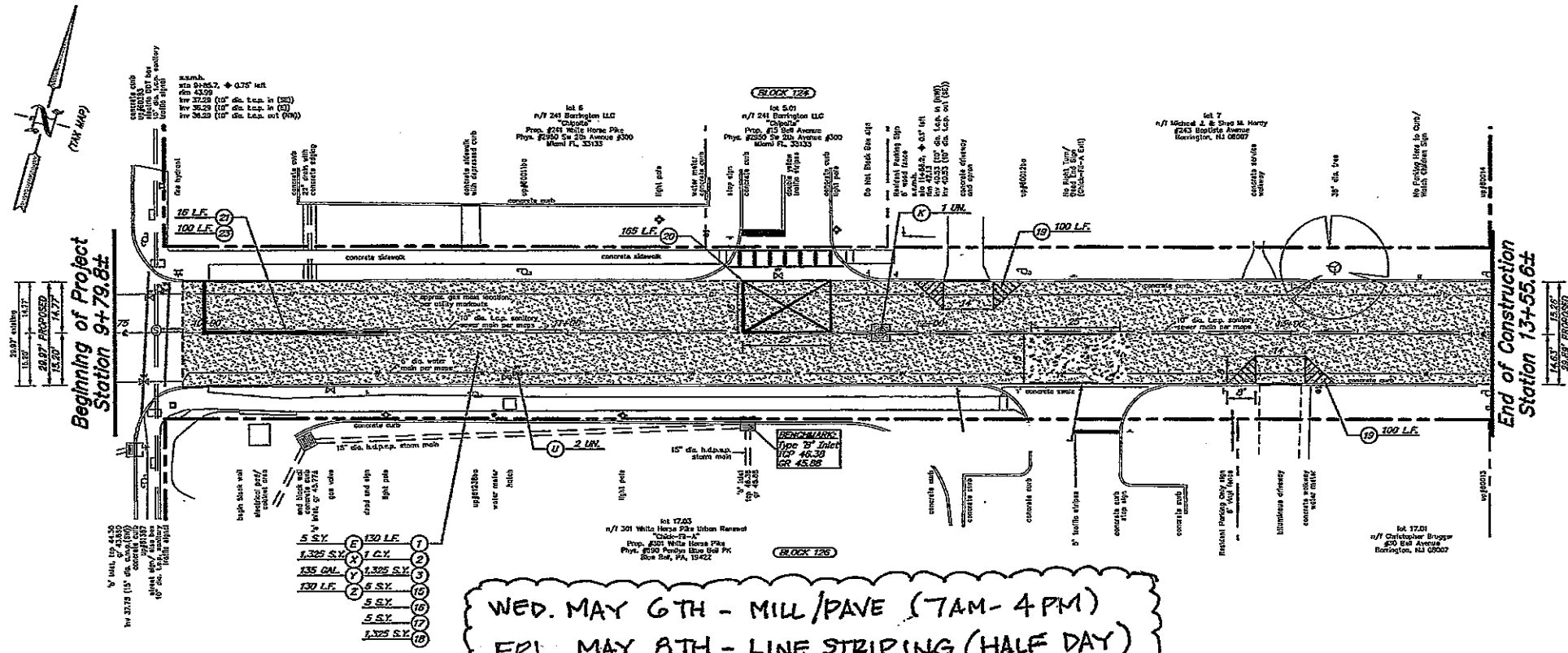
Base Bids 'B'
Bell Avenue Mill and Overlay from the White Horse Pike (NJSH 30)
(Station 9+79.8± to Baptist Avenue (Station 13+55.6±))
 FUNDED BY THE BOROUGH OF BARRINGTON

Payment Items

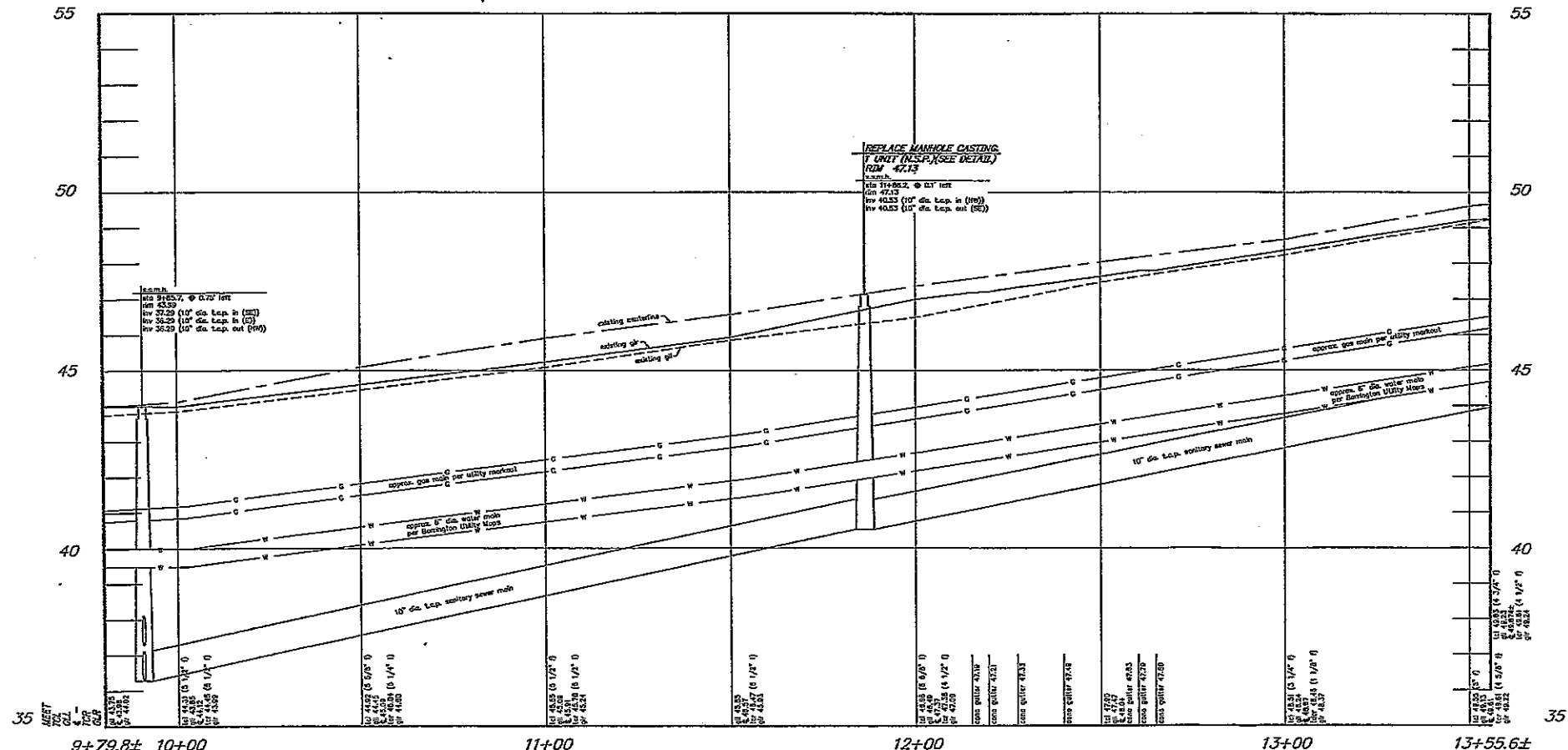
ITEM No.	DESCRIPTION - PAYMENT ITEMS	UNIT	QTY
1	SAWOUT PAVEMENT	L.F.	130
2	EXCAVATION, UNCLASSIFIED	C.Y.	1
3	MILL PAVEMENT, 2" THICK	S.Y.	1325
4	REMOVE TREE, 24" DIA.	UNIT	0
5	6" DIA. P.V.C. SCHEDULE 40, WITH SELECT BACKFILL DESIGNATION F-11, NO. 8 STONE BEDDING AND SOIL STABILIZATION FABRIC	L.F.	0
6	SUMP PUMP CONNECTION, COMPLETE	UNIT	0
7	SUMP PUMP CLEANOUT, COMPLETE	UNIT	0
8	PRECAST TYPE '1' INLET (1/2") WITH SELECT BACKFILL DESIGNATION F-11, NO. 8 STONE BEDDING AND SOIL STABILIZATION FABRIC	UNIT	0
9	6" X 18" X 18" CONCRETE CURB, CLASS 'B' WITH SELECT BACKFILL DESIGNATION F-11 AND DENSE GRADED AGGREGATE SUBBASE, 4" THICK	L.F.	0
10	CONCRETE SIDEWALK AND CURB RAMP, 4" THICK, CLASS 'B' WITH SOIL, AGGREGATE SUBBASE, 4" THICK	S.Y.	0
11	DETECTABLE WARNING SURFACE	S.F.	0
12	CONCRETE DRIVEWAY APRON/ SIDEWALK, 6" THICK, CLASS 'B' WITH DENSE GRADED AGGREGATE SUBBASE, 4" THICK	S.Y.	0
13	DENSE GRADED AGGREGATE SUBBASE, 4" THICK	S.Y.	0
14	HOT MIX ASPHALT, 19M44 BASE COURSE, 3" THICK	S.Y.	0
15	PAVEMENT REINFORCING GEGRID	S.Y.	5
16	DENSE GRADED AGGREGATE SUBBASE, 6" THICK	S.Y.	5
17	HOT MIX ASPHALT, 25M44 BASE COURSE, 4" THICK	S.Y.	5
18	HOT MIX ASPHALT, 9.5M44, SURFACE COURSE, 2" THICK	S.Y.	1325
19	TRAFFIC STRIPES, 6" WIDE	L.F.	200
20	TRAFFIC STRIPES, 6" WIDE	L.F.	330
21	TRAFFIC STRIPES, 12" WIDE	L.F.	16
22	TRAFFIC STRIPES, 24" WIDE	L.F.	0
23	TRAFFIC STRIPES, 4" WIDE, DOUBLE YELLOW	L.F.	100
24	PAINT CURB YELLOW	L.F.	75
25	SIGN	S.F.	5
26	TOPSOIL, 6" THICK AND SOODING	S.Y.	0
27	TREE 2" TO 2-1/2" CALIPER, BAR, 6"-10" HIGH	UNIT	0
28	PRECAST INTERLOCKING LANDSCAPE WALL, COMPLETE	S.F.	0
29	BREAKAWAY BARRICADE	UNIT	0
30	DRUM	UNIT	0
31	TRAFFIC CONE	UNIT	0
32	CONSTRUCTION SIGN	S.F.	0
33	ASPHALT PRICE ADJUSTMENT	L.S.	L.S.
34	FUEL PRICE ADJUSTMENT	L.S.	L.S.

No Specific Payment Items

ITEM No.	DESCRIPTION - NO SPECIFIC PAYMENT ITEMS	UNIT	QTY
A	SOIL EROSION AND SEDIMENT CONTROL	N.S.P.	N.S.P.
B	SUBSURFACE STRUCTURE EXCAVATION	N.S.P.	N.S.P.
C	DEMOLISH TYPE 'B' INLET	UNIT	0
D	RECONSTRUCT ROOF DRAIN/ SUMP PUMP	UNIT	0
E	TEMPORARY ASPHALT (19M44 BASE COURSE) TRENCH PAVEMENT, 3" THICK	S.Y.	5
F	RELOCATE SIGN	UNIT	0
G	REMOVE CONCRETE CURB	UNIT	0
H	REMOVE CONCRETE SIDEWALK	S.Y.	0
I	REMOVE CONCRETE DRIVEWAY APRON/ SIDEWALK	S.Y.	0
J	REMOVE SIGN	UNIT	0
K	REPLACE MANHOLE CASTING	UNIT	1
L	RESET SANITARY SEWER VENT/ CLEANOUT	UNIT	0
M	RESET DECORATIVE BRICK SIDEWALK	S.F.	0
N	RESET GRANITE BLOCK AREA	S.F.	0
O	RESET INLET CASTING	UNIT	0
P	RESET LANDSCAPE AREA	S.F.	0
Q	RESET LANDSCAPE DRIVEWAY STORE	S.Y.	0
R	RESET LANDSCAPE EDGING	L.F.	0
S	RESET GAS VALVE BOX	UNIT	0
T	RESET WATER METER BOX	UNIT	0
U	RESET WATER VALVE BOX	UNIT	2
V	CONNECT PIPE TO INLET	UNIT	0
W	CONNECT PIPE TO MANHOLE	UNIT	0
X	CLEANING AND SWEEPING	S.Y.	1325
Y	TACK COAT, GRADE RS-1	GAL.	135
Z	JOINT SEALER	L.F.	130
AA	CONCRETE SEALING	N.S.P.	N.S.P.
BB	WATERING	N.S.P.	N.S.P.
CC	MAINTENANCE AND PROTECTION OF VEHICULAR AND PEDESTRIAN TRAFFIC	N.S.P.	N.S.P.



Plan: Base Bid 'B': Bell Avenue
 scale: 1" = 20'



Profile: Base Bid 'B': Bell Avenue
 scale: horizontal: 1 inch = 20 feet
 vertical: 1 inch = 2 feet

- Legend:**
- MILL PAVEMENT, 2" THICK
 - CLEANING AND SWEEPING
 - TACK COAT, GRADE RS-1
 - HOT MIX ASPHALT, 9.5M44, SURFACE COURSE, 2" THICK
 - SUBSURFACE STRUCTURE EXCAVATION (N.S.P.)
 - PAVEMENT REINFORCING GEGRID
 - DENSE GRADED AGGREGATE SUBBASE, 6" THICK
 - HOT MIX ASPHALT, 25M44, BASE COURSE, 4" THICK
 - HOT MIX ASPHALT, 9.5M44, SURFACE COURSE, 2" THICK



Know what's below
 Call before you dig.

CONSTRUCTION AND MATERIALS SHALL CONFORM TO THE DEPARTMENT'S STANDARD SPECIFICATIONS FOR ROAD AND BRIDGE CONSTRUCTION, 2019 EDITION, WHICH IS INCORPORATED HEREIN BY REFERENCE, AS AMENDED AND SUPPLEMENTED, AND THE DEPARTMENT'S SUPPLEMENTARY SPECIFICATIONS FOR STATE AID PROJECTS, LATEST EDITION/ REVISION, WHICH IS INCORPORATED HEREIN BY REFERENCE, AS AMENDED AND SUPPLEMENTED. STANDARD CONSTRUCTION DETAILS SHALL CONFORM TO THE LATEST REQUIREMENTS OF THE DEPARTMENT OF TRANSPORTATION, THE NEW JERSEY DEPARTMENT OF TRANSPORTATION "STANDARD ROADWAY CONSTRUCTION/ TRAFFIC CONTROL/ BRIDGE CONSTRUCTION DETAILS" BOOKLET DATED 2016 AND "ELECTRICAL BUREAU STANDARD DETAILS, 2007" AND ALL BASELINE DOCUMENT CHANGES MADE TO THESE CONSTRUCTION DETAILS, SHALL GOVERN, EXCEPT FOR THOSE DETAILS CONTAINED HEREIN. FUNDED THROUGH THE BOROUGH OF BARRINGTON.

REMARKS:
 Type 'B' Inlet located in the Chick-F-A drive thru lane (Closest to Bell Avenue)
 TOP 45.28
 REPRODUCTION, ALTERATION AND AMENDMENT OF THIS PLAN SHALL BE PERFORMED ONLY BY KEY ENGINEERS, INC. AND SHALL BE PERFORMED UNDER THE ABSOLUTE DIRECTION OF THE LICENSED PROFESSIONAL WHOSE NAME AND SIGNATURE APPEARS HEREON.

REV.	DATE	DESCRIPTION	DRWN.	CHKD.
Construction Plan - Base Bid 'B'				
Improvements to 2nd Avenue (Erie Ave to Trenton Ave) with Bell Avenue Mill and Overlay Station 9+79.8± to Station 13+55.6±				
Borough of Barrington Camden County, New Jersey				
DATE: 4/4/2025	DRAWN BY: S.H.	CHKD. BY:	SCALE: AS NOTED	
PROJECT No. 11-48680324	FIELD BOOK/PAGE:	SHEET No. 6 OF 8		
GREGORY BLASE FUSCO PROFESSIONAL ENGINEER				
N.J.P.E. No. 32853		P.A.P.E. No. 038608-E NJ PROFESSIONAL PLANNER No. 4076		
80 S. WHITE HORSE PIKE BURLINGAME, NEW JERSEY 08009-2399 CERTIFICATE OF AUTHORIZATION #24262841300		DATE: 4/1/25		