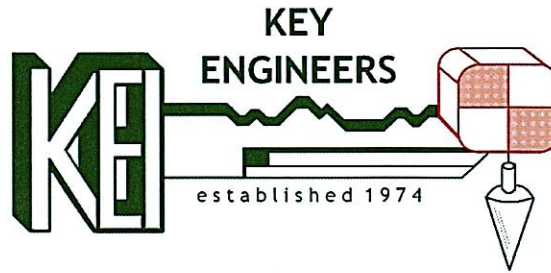


ENGINEERING & PLANNING

Municipal
Consulting
Construction
Residential
Commercial
Industrial
Construction Management



SURVEYING

Residential
Commercial
Industrial
Governmental
Construction

~Celebrating Over 52 Years of Excellence~

June 22, 2026

*Hand Delivery

TO: ALL RESIDENTS ALONG DEVON ROAD
From Hutchinson Avenue (CR 665) to Tavistock Boulevard

RE: NOTICE OF CONSTRUCTION
IMPROVEMENTS TO DEVON ROAD
From Hutchinson Avenue (C.R. 665) to Tavistock Boulevard
(Partially Funded through the N.J.D.O.T., FY2025)
Borough of Barrington, Camden County, New Jersey
(KEI #11-490BR0524)

Dear Residents:

The Borough of Barrington has awarded a contract to Asphalt Paving Systems, Inc. of Hammonton, New Jersey for the completion of the above referenced project. The contractor anticipates commencing with construction the week of June 29, 2026, weather permitting.

The construction consists of tree removal and installation, roadway reconstruction and narrowing, concrete curb and driveway apron replacement, isolated concrete sidewalk replacement, handicap ramps, line striping and associated improvements (see attached reduced copies of the construction plan sheets).

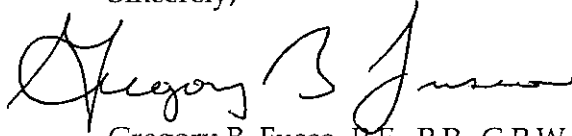
During the period of construction, residents and motorists may experience some inconveniences, however, the workforce will make every effort to minimize said inconveniences. Emergency vehicles such as fire apparatus, ambulance and police vehicles will have access to the roadway at all times. Local traffic will be maintained a majority of the time, however, during the period of time that the contractor is working in the vicinity of your property, you will experience some inconvenience.

If you are aware of any hazardous site conditions caused by construction, please contact Mr. Gregory Evans, Project Manager of this office at 856-767-6361 (Ext. 28) or 609-922-2276 (cell) or the contractor, Mr. Tom Puentes at 609-234-3245, immediately, so the hazardous condition(s) can be corrected.

This project, which is partially funded by the New Jersey Department of Transportation (N.J.D.O.T.), will be inspected by Key Engineers, Inc.

Your patience and cooperation during the time of construction is requested and sincerely appreciated. We are confident that the completed project will more than compensate for any inconveniences you may experience during the period of construction.

Sincerely,

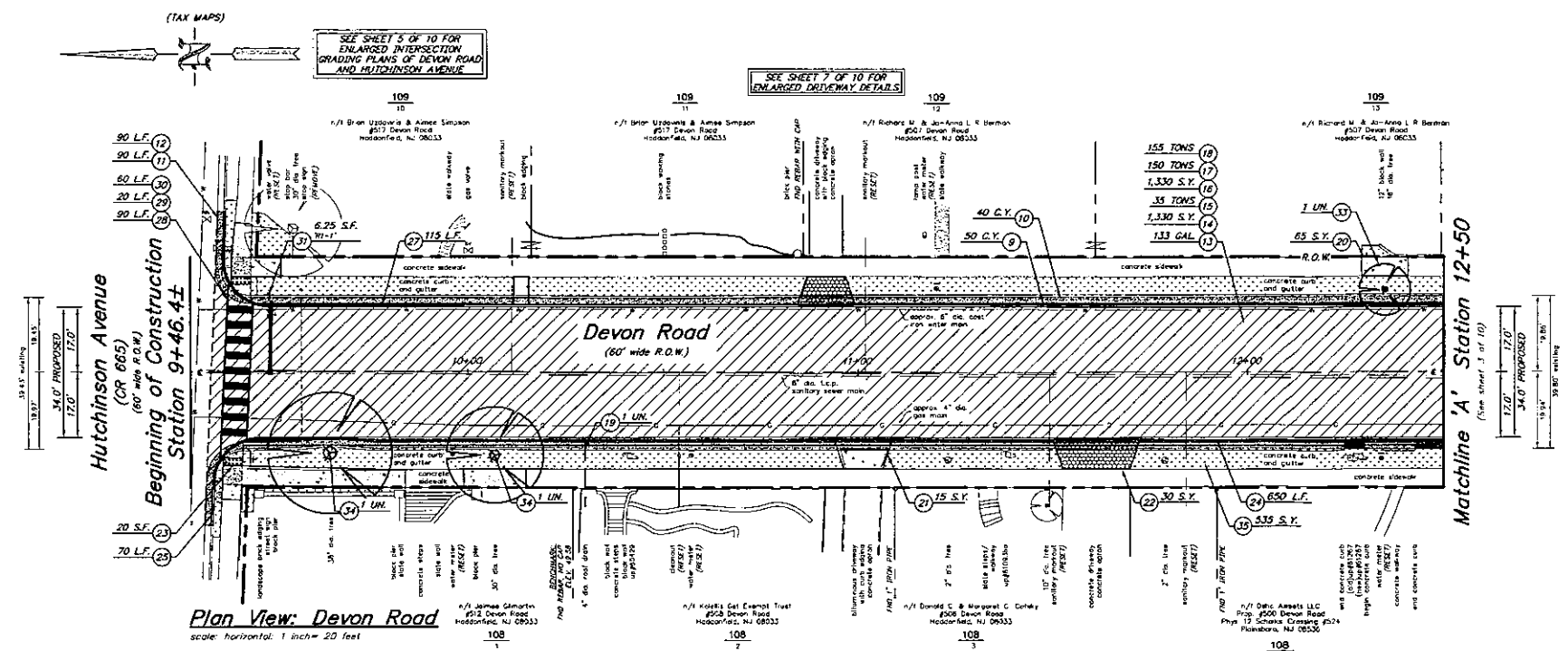


Gregory B. Fusco, P.E., P.P., C.P.W.M.
Certified Municipal Engineer
Barrington Borough Engineer

GE:ke

- cc: Mayor and Council
Police Chief Mike Minardi, Barrington Police Department (email)
Captain Dave Pawling, Barrington Police Department (email)
Mr. Michael Ciocco, Superintendent of Sewer Department/Public Works (email)
Ms. Denise Moules, R.M.C., Borough Clerk (email)
Mr. Thomas Berryman, N.J.D.O.T. District Manager (email)
Mr. Don Potter, Asphalt Paving Systems, Inc. (email)

Projects\11\490\Docs\Notice of Construction



Plan View: Devon Road
scale: horizontal: 1 inch = 20 feet

Legend:

- TACK COAT, GRADE CRS-1H SOIL CEMENT BASE COURSE, 10" THICK DRY ADDITIVES (PORTLAND CEMENT) HMA MILLING, 4"-6" THICK HOT MIX ASPHALT, 9.5M64 SURFACE COURSE, 2" THICK HOT MIX ASPHALT, 12.5M64 BASE COURSE, 2" THICK
- REMOVE CONCRETE CURB AND GUTTER BORROW EXCAVATION
- CONCRETE SIDEWALK AND CURB RAMP, 4" THICK CLASS 'B' WITH SOIL AGGREGATE SUBBASE, 4" THICK CONCRETE DRIVEWAY APRON/ SIDEWALK, 6" THICK CLASS 'B' WITH DENSE GRADED AGGREGATE SUBBASE, 4" THICK
- EXPOSED AGGREGATE CONCRETE DRIVEWAY APRON/ SIDEWALK, 6" THICK CLASS 'B' WITH DENSE GRADED AGGREGATE SUBBASE, 4" THICK
- TOPSOIL, 5" THICK AND SOODING

NOTE: THE TREE SPECIES AND PLANTING LOCATION SHALL BE SELECTED BY THE BOROUGH REPRESENTATIVES.

Base Bid:
Improvements to Devon Road from Hutchinson Avenue (CR 665) to Tavistock Boulevard (PARTIALLY FUNDED THROUGH THE N.J.D.O.T. MUNICIPAL AID PROGRAM, FY2025)
Payment Items:

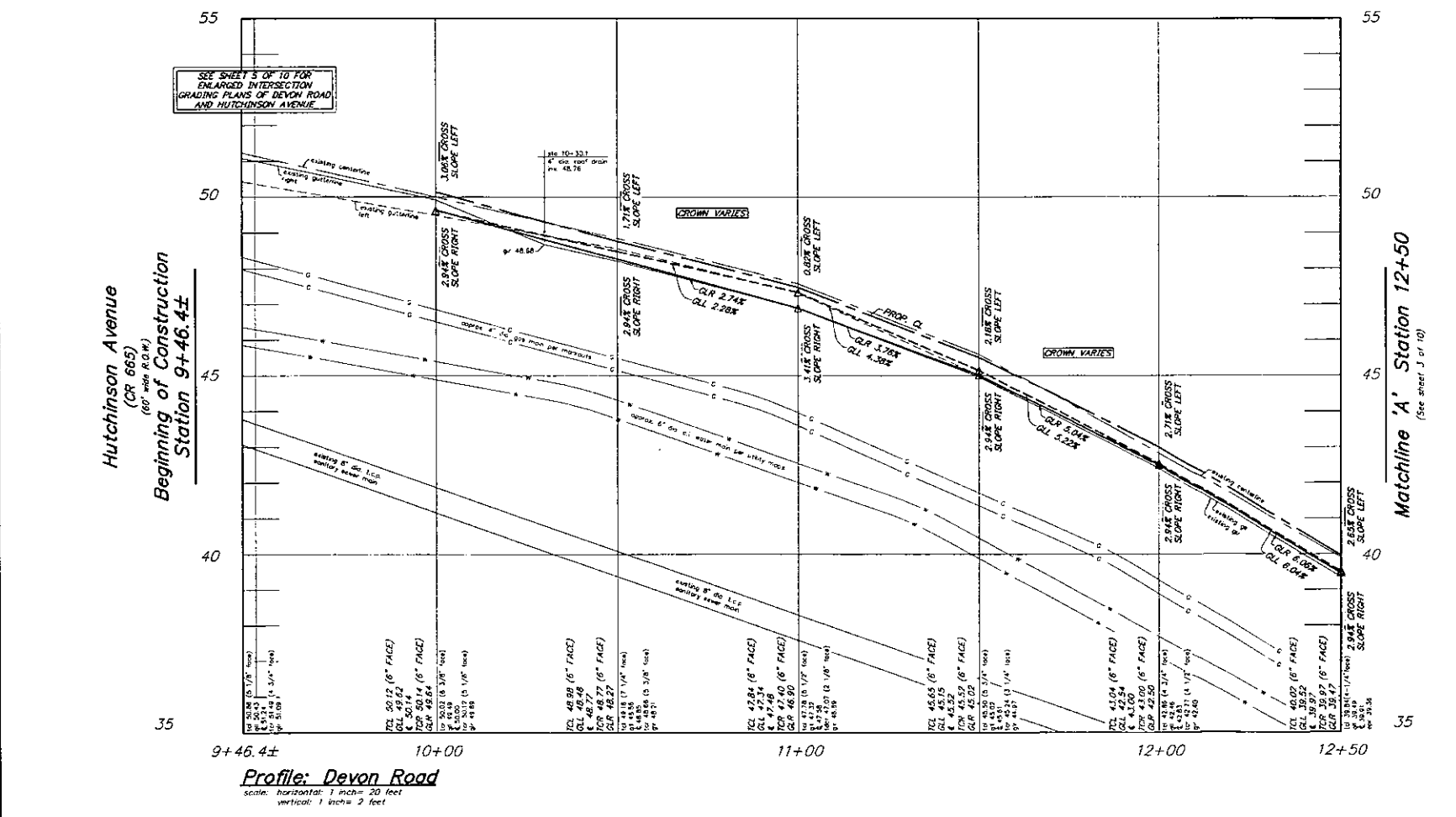
| ITEM NO. | DESCRIPTION - PAY ITEM | UNIT | SHEET 1 |
|----------|--|----------|---------|
| 1 | CONCRETE WASHOUT SYSTEM | LUMP SUM | L.S. |
| 2 | BREAKAWAY BARRICADE | UNIT | 20 |
| 3 | DRUM | UNIT | 30 |
| 4 | TRAFFIC CONE | UNIT | 100 |
| 5 | CONSTRUCTION SIGN | S.F. | 231.5 |
| 6 | FUEL PRICE ADJUSTMENT | DOLLAR | - |
| 7 | ASPHALT PRICE ADJUSTMENT | DOLLAR | - |
| 8 | CLEARING SITE | LUMP SUM | 1 |
| 9 | EXCAVATION, UNCLASSIFIED | C.Y. | 50 |
| 10 | BORROW EXCAVATION | C.Y. | 40 |
| 11 | SAWCUT PAVEMENT | L.F. | 90 |
| 12 | JOINT SEALER | L.F. | 90 |
| 13 | TACK COAT, GRADE CRS-1H | GAL. | 133 |
| 14 | SOIL CEMENT BASE COURSE, 10" THICK | S.Y. | 1,330 |
| 15 | DRY ADDITIVES (PORTLAND CEMENT) | TONS | 35 |
| 16 | HMA MILLING, 4"-6" THICK | S.Y. | 1,330 |
| 17 | HOT MIX ASPHALT, 9.5M64 SURFACE COURSE, 2" THICK | TONS | 150 |
| 18 | HOT MIX ASPHALT, 12.5M64 BASE COURSE, 2" THICK | TONS | 150 |
| 19 | RECONSTRUCT ROOF DRAIN/ SUMP PUMP | UNIT | 1 |
| 20 | CONCRETE SIDEWALK AND CURB RAMP, 4" THICK, CLASS 'B' WITH SOIL AGGREGATE SUBBASE, 4" THICK | S.Y. | 65 |
| 21 | CONCRETE DRIVEWAY APRON/ SIDEWALK, 6" THICK, CLASS 'B' WITH DENSE GRADED AGGREGATE SUBBASE, 4" THICK | S.Y. | 15 |
| 22 | EXPOSED AGGREGATE CONCRETE DRIVEWAY APRON/ SIDEWALK, 6" THICK, CLASS 'B' WITH DENSE GRADED AGGREGATE SUBBASE, 4" THICK | S.Y. | 30 |
| 23 | DETECTABLE WARNING SURFACE | S.Y. | 20 |
| 24 | 6"x8"x18" CONCRETE VERTICAL CURB, CLASS 'B' WITH SELECT BACKFILL DESIGNATION 1-11 AND DENSE GRADED AGGREGATE SUBBASE, 4" THICK | L.F. | 650 |
| 25 | 8"x8"x18" CONCRETE VERTICAL CURB, CLASS 'B' WITH SELECT BACKFILL DESIGNATION 1-11 AND DENSE GRADED AGGREGATE SUBBASE, 4" THICK | L.F. | 70 |
| 26 | PRECAST INTERLOCKING LANDSCAPE WALL | S.F. | 0 |
| 27 | PAINT CURB | L.F. | 115 |
| 28 | TRAFFIC STRIPES, 6" WIDE | L.F. | 80 |
| 29 | TRAFFIC STRIPES, 12" WIDE | L.F. | 20 |
| 30 | TRAFFIC STRIPES, 24" WIDE | L.F. | 60 |
| 31 | REGULATORY AND WARNING SIGN | S.F. | 6.25 |
| 32 | RESET MANHOLE, SANITARY SEWER, USE NEW CASTING | UNIT | 0 |
| 33 | REMOVE TREE, 16" DIA | UNIT | 1 |
| 34 | REMOVE TREE, 30"-36" DIA | UNIT | 2 |
| 35 | TOPSOIL, 5" THICK AND SOODING | S.Y. | 535 |
| 36 | TREE, 2" TO 2-1/2" CALIPER, 8'-10' HIGH | UNIT | 8 |

Clearing Site Items:

| ITEM NO. | CLEARING SITE ITEMS | UNIT | SHEET 1 |
|----------|--|------|---------|
| A | REMOVE CONCRETE CURB AND GUTTER | L.F. | 700 |
| B | REMOVE CONCRETE DRIVEWAY APRON/ SIDEWALK | S.Y. | 30 |
| C | REMOVE CONCRETE SIDEWALK | S.Y. | 60 |
| D | REMOVE SIGN | UNIT | 1 |
| E | RESET BRICK PAVEMENT WALKWAY | S.F. | 0 |
| F | RESET GAS VALVE BOX | UNIT | 8 |
| G | RESET LANDSCAPE EDGING, BRICK | L.F. | 14 |
| H | RESET SANITARY SEWER VENT/ CLEANOUT | UNIT | 8 |
| I | RESET WATER METER | UNIT | 8 |
| J | RESET WATER VALVE BOX | UNIT | 2 |
| K | N.J.D.O.T. CIVIL RIGHTS SIGN | UNIT | 1 |

Driveway Apron Schedule

| STREET ADDRESS | EXISTING SLOPE | PROPOSED SLOPE | PROPOSED WIDTH (FULL DEPRESSION) |
|-----------------|----------------|----------------|----------------------------------|
| #506 DEVON ROAD | 13.5% | 8.7% | 21.0' |
| #507 DEVON ROAD | 10.0% | 6.5% | 14.0' |
| #508 DEVON ROAD | 9.6% | 10.8% | 14.0' |



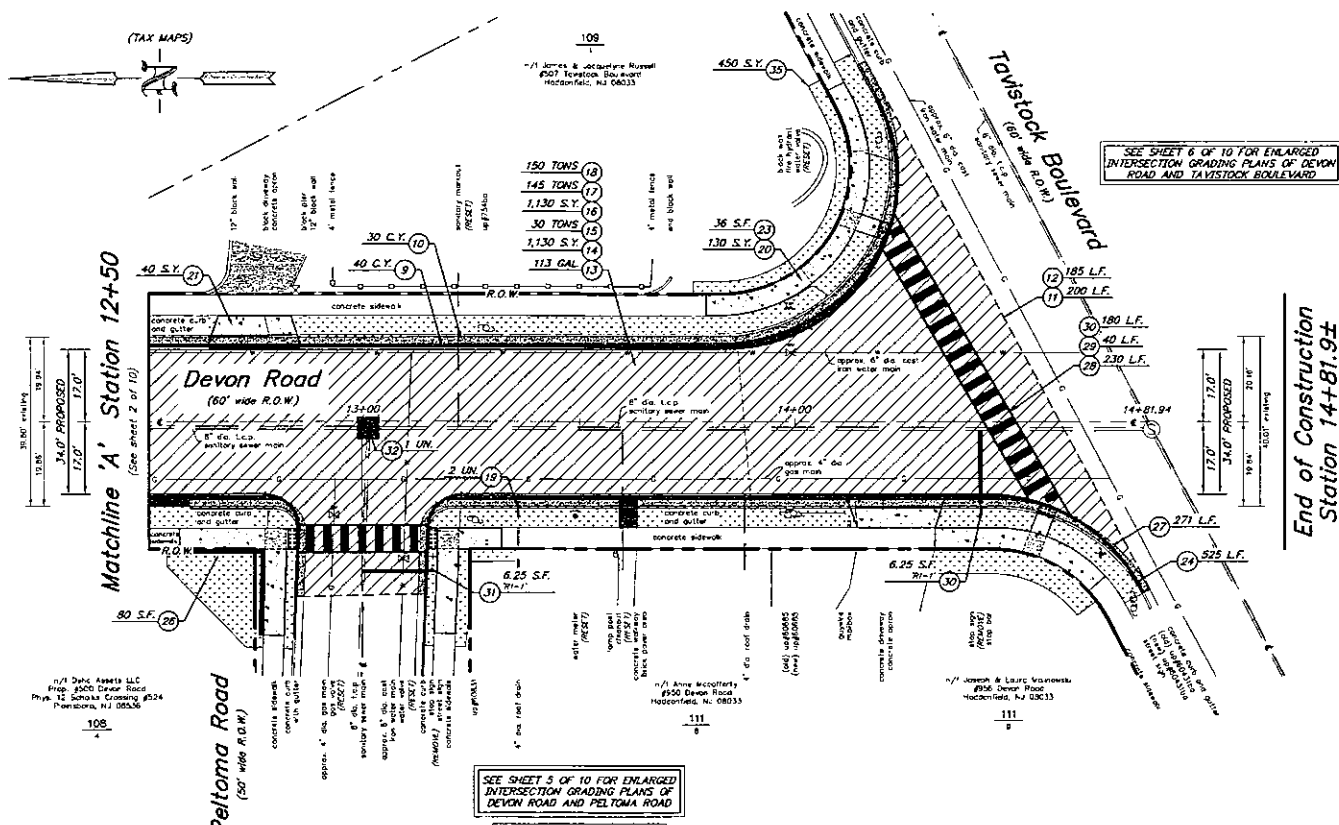
Profile: Devon Road
scale: horizontal: 1 inch = 20 feet
vertical: 1 inch = 2 feet



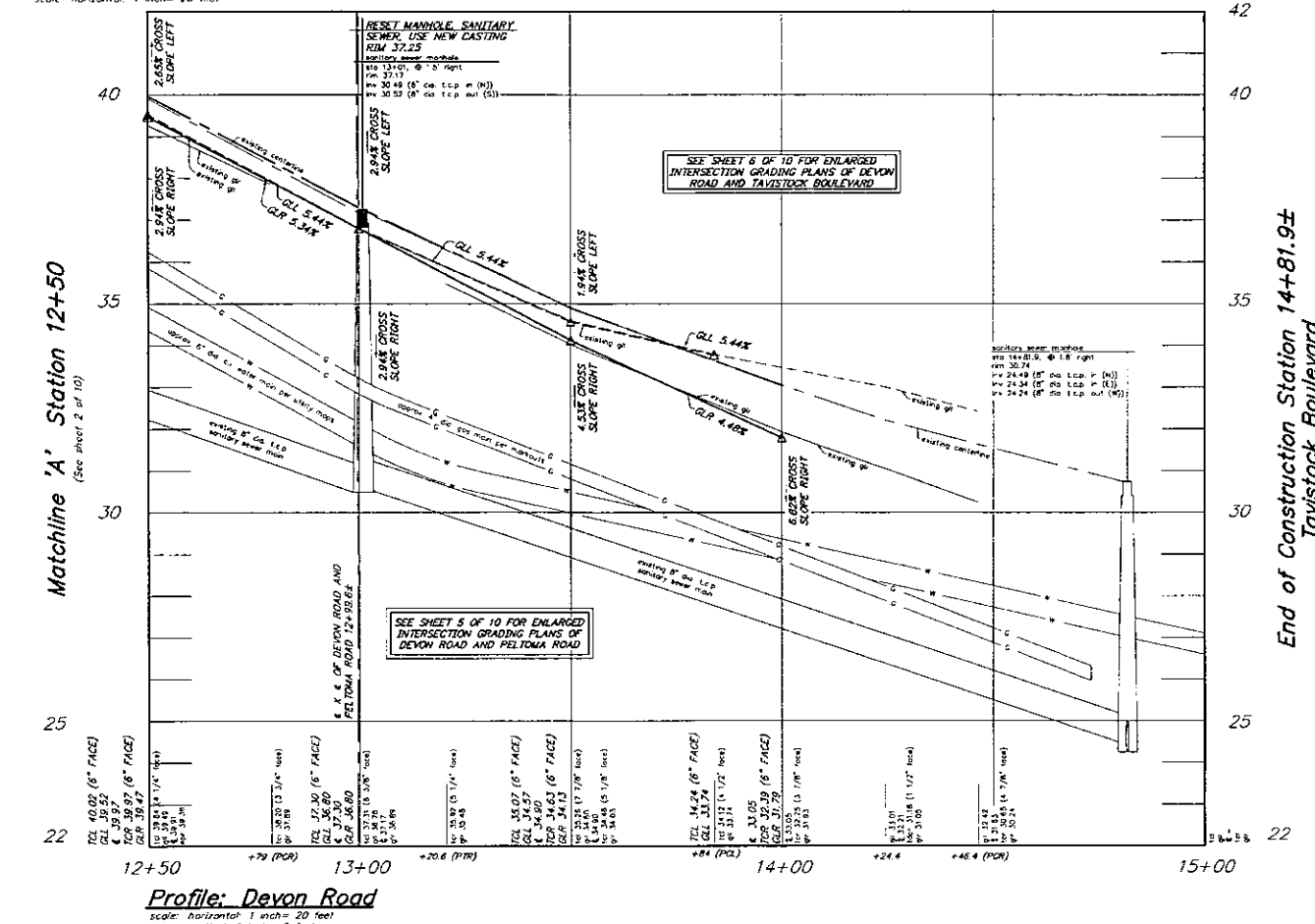
Know what's below
Call before you dig.

REPRODUCTION, ALTERATION AND AMENDMENT OF THIS PLAN SHALL BE PERFORMED UNDER THE ABSOLUTE DIRECTION OF THE LICENSED PROFESSIONAL WHOSE NAME AND SIGNATURE APPEARS HEREON.

| REV. | DATE | DESCRIPTION | DRWN. | CHKD. |
|---|------|-------------|-------|-------|
| Construction Plan | | | | |
| Improvements to Devon Road from Hutchinson Avenue (CR 665) to Tavistock Boulevard Station 9+46.4± to Station 12+50 | | | | |
| Borough of Barrington Camden County, New Jersey | | | | |
| DATE: March 25, 2026 (DRAWN BY: S.M. / CHKD BY:) SCALE: AS NOTED | | | | |
| PROJECT NO. 11-49080524 FIELD BOOK/PAGE: SHEET NO. 2 OF 10 | | | | |
| GREGORY BLASE FUSCO PROFESSIONAL ENGINEER | | | | |
| N.J.P.E. No. 32853 P.A.P.E. No. 036608-E NJ PROFESSIONAL PLANNER No. 4076 | | | | |
| KEY ENGINEERS, INC. | | | | |
| 80 S. WHITE HORSE PIKE BURLINGAME, NEW JERSEY 08009-2399 PHONE: (856) 252-4111 FAX: (856) 252-1081 WWW.KEYENGINEERS.COM | | | | |



Plan View: Devon Road
scale: horizontal 1 inch = 20 feet



Profile: Devon Road
scale: horizontal 1 inch = 20 feet
vertical 1 inch = 2 feet

Legend:

- TACK COAT, GRADE CRS-1H
SOIL CEMENT BASE COURSE, 10" THICK
DRY ADDITIVES (PORTLAND CEMENT)
HMA MILLING, 4"-6" THICK
HOT MIX ASPHALT, 9.5% SURFACE COURSE, 2" THICK
HOT MIX ASPHALT, 12.5% SURFACE COURSE, 2" THICK
- REMOVE CONCRETE CURB AND GUTTER
BORROW EXCAVATION
- CONCRETE SIDEWALK AND CURB RAMP, 4" THICK CLASS 'B',
WITH SOIL AGGREGATE SUBBASE, 4" THICK
CONCRETE DRIVEWAY APRON/ SIDEWALK, 6" THICK CLASS 'B'
WITH DENSE GRADED AGGREGATE SUBBASE, 4" THICK
- TOPSOIL, 5" THICK AND SOODING

Driveway Apron Schedule

| STREET ADDRESS | EXISTING SLOPE | PROPOSED SLOPE | PROPOSED WIDTH (FULL DEPRESSION) |
|----------------------|----------------|----------------|----------------------------------|
| #507 TAVISTOCK BLVD. | 12.2% | 5.5% | 21.0' |
| #956 DEVON ROAD | 10.9% | 6.5% | 23.0' |

Base Bid:

Improvements to Devon Road from Hutchinson Avenue (CR 665) to Tavistock Boulevard (PARTIALLY FUNDED THROUGH THE N.J.D.O.T. MUNICIPAL AID PROGRAM, FY2025)
Comment Items:

| ITEM NO. | DESCRIPTION - PAY ITEM | UNIT | SHEET 2 |
|----------|--|----------|---------|
| 1 | CONCRETE WASHOUT SYSTEM | LUMP SUM | L.S. |
| 2 | BREAKAWAY BARRICADE | UNIT | 0 |
| 3 | DRUM | UNIT | 0 |
| 4 | TRAFFIC CONE | UNIT | 0 |
| 5 | CONSTRUCTION SIGN | S.F. | 0 |
| 6 | FUEL PRICE ADJUSTMENT | DOLLAR | - |
| 7 | ASPHALT PRICE ADJUSTMENT | DOLLAR | - |
| 8 | CLEARING SITE | LUMP SUM | 1 |
| 9 | EXCAVATION, UNCLASSIFIED | C.Y. | 40 |
| 10 | BORROW EXCAVATION | C.Y. | 30 |
| 11 | SAWCUT PAVEMENT | L.F. | 200 |
| 12 | JOINT SEALER | L.F. | 165 |
| 13 | TACK COAT, GRADE CRS-1H | GAL | 113 |
| 14 | SOIL CEMENT BASE COURSE, 10" THICK | S.Y. | 1,130 |
| 15 | DRY ADDITIVES (PORTLAND CEMENT) | TONS | 30 |
| 16 | HMA MILLING, 4"-6" THICK | S.Y. | 1,130 |
| 17 | HOT MIX ASPHALT, 9.5% SURFACE COURSE, 2" THICK | TONS | 145 |
| 18 | HOT MIX ASPHALT, 12.5% SURFACE COURSE, 2" THICK | TONS | 150 |
| 19 | RECONSTRUCT ROOF DRAIN/ SUMP PUMP | UNIT | 2 |
| 20 | CONCRETE SIDEWALK AND CURB RAMP, 4" THICK CLASS 'B' WITH SOIL AGGREGATE SUBBASE, 4" THICK | S.Y. | 130 |
| 21 | CONCRETE DRIVEWAY APRON/ SIDEWALK, 6" THICK CLASS 'B' WITH DENSE GRADED AGGREGATE SUBBASE, 4" THICK | S.Y. | 40 |
| 22 | EXPOSED AGGREGATE CONCRETE DRIVEWAY APRON/ SIDEWALK, 6" THICK CLASS 'B' WITH DENSE GRADED AGGREGATE SUBBASE, 4" THICK | S.Y. | 0 |
| 23 | DETECTABLE WARNING SURFACE | S.Y. | 35 |
| 24 | 8"x8"x18" CONCRETE VERTICAL CURB, CLASS 'B' WITH SELECT BACKFILL DESIGNATION 1-11 AND DENSE GRADED AGGREGATE SUBBASE, 4" THICK | L.F. | 525 |
| 25 | 8"x8"x18" CONCRETE VERTICAL CURB, CLASS 'B' WITH SELECT BACKFILL DESIGNATION 1-11 AND DENSE GRADED AGGREGATE SUBBASE, 4" THICK | L.F. | 0 |
| 26 | PRECAST INTERLOCKING LANDSCAPE WALL | S.F. | 80 |
| 27 | PAINT CURB | L.F. | 271 |
| 28 | TRAFFIC STRIPES, 6" WIDE | L.F. | 230 |
| 29 | TRAFFIC STRIPES, 12" WIDE | L.F. | 40 |
| 30 | TRAFFIC STRIPES, 24" WIDE | L.F. | 180 |
| 31 | REGULATORY AND WARNING SIGN | S.F. | 12.5 |
| 32 | RESET MANHOLE, SANITARY SEWER, USE NEW CASTING | UNIT | 1 |
| 33 | REMOVE TREE, 16" DIA | UNIT | 0 |
| 34 | REMOVE TREE, 30"-38" DIA | UNIT | 0 |
| 35 | TOPSOIL, 5" THICK AND SOODING | S.Y. | 450 |
| 36 | TREE, 2" TO 2-1/2" CALIPER, 8'-10' HIGH | UNIT | 0 |

Clearing Site Items:

| ITEM NO. | CLEARING SITE ITEMS | UNIT | SHEET 2 |
|----------|--|------|---------|
| A | REMOVE CONCRETE CURB AND GUTTER | L.F. | 500 |
| B | REMOVE CONCRETE DRIVEWAY APRON/ SIDEWALK | S.Y. | 20 |
| C | REMOVE CONCRETE SIDEWALK | S.Y. | 150 |
| D | REMOVE SIGN | UNIT | 2 |
| E | RESET BRICK PAVEMENT WALKWAY | S.F. | 35 |
| F | RESET GAS VALVE BOX | UNIT | 4 |
| G | RESET LANDSCAPE EDGING, BRICK | L.F. | 0 |
| H | RESET SANITARY SEWER VENT/ CLEANOUT | UNIT | 3 |
| I | RESET WATER METER | UNIT | 3 |
| J | RESET WATER VALVE BOX | UNIT | 2 |
| K | N.J.D.O.T. CIVIL RIGHTS SIGN | UNIT | 0 |



Know what's below
Call before you dig.

REPRODUCTION, ALTERATION AND AMENDMENT OF THIS PLAN SHALL BE PERFORMED ONLY BY KEY ENGINEERS, INC. AND SHALL BE PERFORMED UNDER THE ABSOLUTE DIRECTION OF THE LICENSED PROFESSIONAL WHOSE NAME AND SIGNATURE APPEARS HEREON.

| REV. | DATE | DESCRIPTION | DRWN. | CHKD. |
|---|------|-------------|-------|-------|
| Construction Plan | | | | |
| Improvements to Devon Road from Hutchinson Avenue (CR 665) to Tavistock Boulevard Station 12+50 to Station 15+00 | | | | |
| Borough of Barrington Camden County, New Jersey | | | | |
| DATE: March 25, 2026 DRAWN BY: SJL CHKD BY: [Signature] SCALE: AS NOTED | | | | |
| PROJECT No. 11-49080524 FIELD BOOK/PAGE: [Blank] SHEET No. 3 OF 10 | | | | |

GREGORY BLASE FUSCO
PROFESSIONAL ENGINEER
N.J.P.E. No. 32853 | P.A.P.E. No. 035608-E
NJ PROFESSIONAL PLANNER No. 4076

KEY ENGINEERS, INC.
 80 S. WHITE HORSE Pkve
 BERLIN, NEW JERSEY 08009-2199
 CERTIFICATE OF AUTHORIZATION #246A2804300

DATE: 3-25-26